



---

# iGp12-372F Signal Processor

---

## TECHNICAL USER MANUAL

*Author:*  
Dmitry TEYTELMAN

*Revision:*  
2.17

June 3, 2021



Information in this document is subject to change without notice.

Copyright © Dimtel, Inc., 2007-2021. All rights reserved.

Dimtel, Inc.  
2059 Camden Avenue, Suite 136  
San Jose, CA 95124  
Phone: +1 650 862 8147  
Fax: +1 603 218 6669  
[www.dimtel.com](http://www.dimtel.com)

# Contents

<b>1</b>	<b>Regulatory Compliance Information</b>	<b>4</b>
<b>2</b>	<b>Introduction</b>	<b>5</b>
2.1	Delivery Checklist . . . . .	5
2.2	System Overview . . . . .	5
2.3	Front Panel Features . . . . .	7
2.4	Rear Panel Features . . . . .	9
2.5	AC Power Connection . . . . .	10
2.6	Cooling Fan Filter Maintenance . . . . .	10
2.7	Getting Started . . . . .	12
<b>3</b>	<b>IOC Setup</b>	<b>12</b>
<b>4</b>	<b>Utilities and Selftest</b>	<b>15</b>
4.1	Utilities . . . . .	15
4.2	Selftest . . . . .	16
<b>5</b>	<b>User Interface</b>	<b>19</b>
5.1	Installation . . . . .	19
5.2	Starting the EDM . . . . .	20
5.3	Bunch Pattern Specification . . . . .	21
5.4	Bunch Enable Masks . . . . .	21
5.5	Data Acquisition Capabilities . . . . .	21
5.6	Multi-bunch Acquisition Timing . . . . .	22
5.6.1	Grow/damp . . . . .	23
5.6.2	Post-mortem . . . . .	23
5.6.3	Non-invasive monitoring . . . . .	24
5.7	Display Background Color . . . . .	24
5.8	Display Panels . . . . .	24
5.8.1	Main Panel . . . . .	24
5.8.2	Control Panel . . . . .	26
5.8.3	Coefficients Panel . . . . .	29
5.8.4	Expert Coefficients Control Panel . . . . .	32
5.8.5	Coefficient Generator Panel . . . . .	34
5.8.6	Drive Sources . . . . .	36
5.8.7	Bunch Cleaning Panel . . . . .	40

## CONTENTS

---

5.8.8	Timing Panel . . . . .	42
5.8.9	Frequency Counter Panel . . . . .	43
5.8.10	Data Acquisition Controls . . . . .	45
5.8.11	Waveforms Panel . . . . .	48
5.8.12	Single Bunch Acquisition Controls . . . . .	50
5.8.13	Single Bunch Waveforms Panel . . . . .	52
5.8.14	Phase Tracking Panel . . . . .	54
5.8.15	Environmental Monitoring Panel . . . . .	58
5.8.16	Device Controls Panel . . . . .	59
5.8.17	Mask Panel . . . . .	60
5.8.18	AD5644 8-channel DAC Panel . . . . .	61
5.8.19	MAX1202 8-channel ADC Panel . . . . .	61
5.8.20	GPIO Panels . . . . .	62
5.8.21	Power Amplifiers Panel . . . . .	67
5.8.22	MILMEGA serial/USB . . . . .	67
5.8.23	MILMEGA DB-15 . . . . .	68
5.8.24	Mini-Circuits ZT-102 . . . . .	69
5.8.25	Information Panel . . . . .	69
<b>6</b>	<b>External Software Interface</b>	<b>70</b>
<b>7</b>	<b>Specifications</b>	<b>73</b>
<b>8</b>	<b>Warranty and Support</b>	<b>77</b>
8.1	Warranty . . . . .	77
8.2	Support . . . . .	77
<b>9</b>	<b>Appendix A: Address Map</b>	<b>78</b>
9.1	Registers . . . . .	78
9.1.1	Overall Layout . . . . .	78
9.1.2	Gateware Config Register . . . . .	80
9.2	Environmental monitor . . . . .	82
9.3	MAX1202 8-channel ADC . . . . .	84
9.4	AD5644 DACs . . . . .	84
9.5	ECL delay lines . . . . .	85
9.6	General-purpose digital I/O . . . . .	86
9.7	Memory . . . . .	87

## CONTENTS

---

<b>10 Appendix B: Connector Pinouts</b>	<b>88</b>
<b>11 Glossary</b>	<b>93</b>

## 1 Regulatory Compliance Information

This equipment requires a ground connection provided by the power source. The exposed metal parts of the unit are connected to the power ground to protect against electrical shock. Always use an outlet with properly connected protective ground.

iGp12-372F was designed and tested to operate safely under the following environmental conditions:

- indoor use;
- altitude to 2000 meters;
- temperatures from 5 to 40 °C;
- maximum relative humidity 80% for temperature 31 °C, decreasing linearly to 50% @ 40 °C;
- pollution category II;
- overvoltage category II;
- mains supply variations of  $\pm 10\%$  of nominal.

iGp12-372F contains no user serviceable parts inside. Do not operate with the cover removed. Refer to qualified personnel for service.

**NOTE:** *This equipment has been tested and found to comply with the limits for a Class A digital device, pursuant to Part 15 of the FCC Rules. These limits are designed to provide reasonable protection against harmful interference when the equipment is operated in a commercial environment. This equipment generates, uses, and can radiate radio frequency energy and, if not installed and used in accordance with the instruction manual, may cause harmful interference to radio communications. Operation of this equipment in a residential area is likely to cause harmful interference in which case the user will be required to correct the interference at his own expense.*

**NOTE:** *This Class A digital apparatus complies with Canadian ICES-003. Cet appareil numérique de la classe A est conforme à la norme NMB-003 du Canada.*

## 2 Introduction

### 2.1 Delivery Checklist

1. iGp12-372F chassis;
2. AC power cord;
3. 16-pin ribbon cable;
4. 0.91 m SMA-to-SMA cable;
5. Compact disk with software and documentation;
6. User manual;
7. CE declaration of conformity.

### 2.2 System Overview

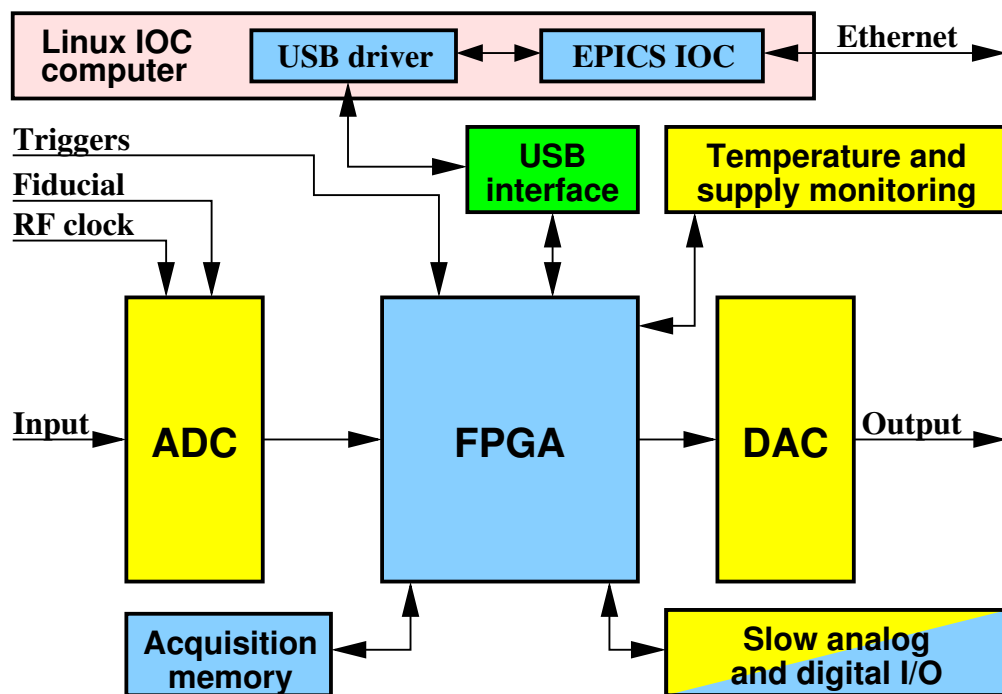


Figure 1: iGp12-372F block diagram

iGp12-372F signal processor is designed for the bunch-by-bunch feedback and diagnostics in lepton storage rings. Functionally iGp12-372F implements

## 2.2 System Overview

a baseband bunch-by-bunch processing channel configured for 372 bunches. Each bunch is processed in a 32-tap **finite impulse response (FIR)** filter before being sent to the one-turn delay and, from there, to the high-speed **digital-to-analog converter (DAC)**.

A top-level block diagram of the iGp12-372F system is shown in Figure 1. The main signal processing chain consists of a high-speed 12-bit **analog-to-digital converter (ADC)**, a **field programmable gate array (FPGA)**, and a high-speed 12-bit **DAC**, all driven by the **radio frequency (RF)** clock. In addition to performing real-time control computations, the **FPGA** interfaces to a number of on-board devices, such as high-speed data acquisition memory (**static random access memory (SRAM)**), low-speed analog and digital **input/output (I/O)**, as well as temperature and supply voltage monitors. In turn, the **FPGA** uses an internal **universal serial bus (USB)** connection to communicate to an embedded **input-output controller (IOC)** computer housed in the same chassis. The **IOC** runs the **Linux** operating system and is connected to the overall control system via the **Ethernet**.

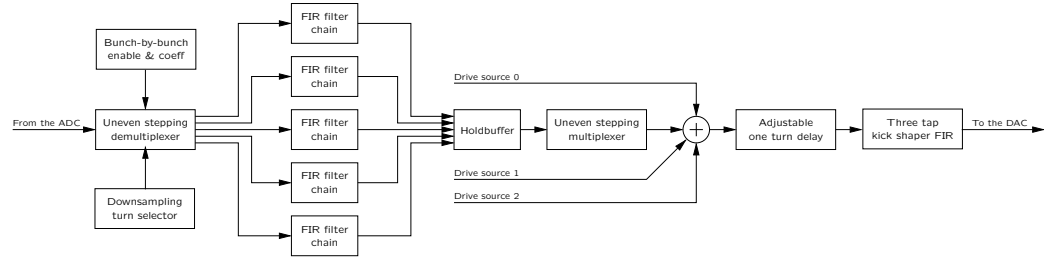


Figure 2: Main processing chain

Main signal processing chain in the iGp12-372F **FPGA** is illustrated in Fig. 2. Five **FIR** filter chains process parallelized bunch signals on every turn or, if desired, with downsampling. When downsampling is used, a holdbuffer replicates the bunch-by-bunch kick pattern on turns where new correction is not computed. Three drive sources with bunch-by-bunch enable masks are optionally added to the output of the feedback filter. Adjustable one turn delay is used to time the kick to the passage of the bunch through the kicker.



## 2.3 Front Panel Features

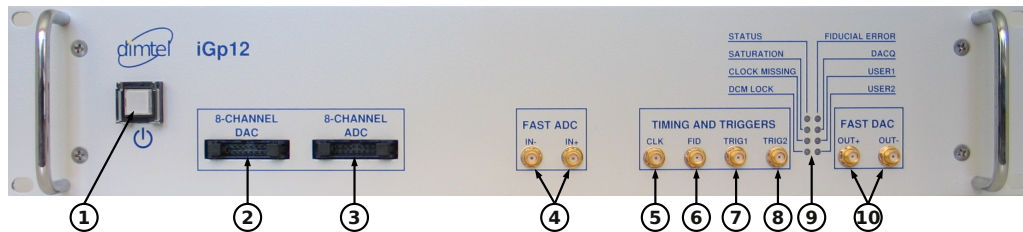


Figure 3: Front panel features

### 1) Power switch

This momentary-on lighted switch turns iGp12-372F on and off. From the off condition, the unit will take 25–30 seconds to fully boot. Shutdown time after power switch actuation is 3–5 seconds.

### 2) Low-speed DAC

This 16-pin connector provides 8 general-purpose analog outputs. 14-bit DAC settings are adjustable via experimental physics and industrial control system (EPICS).

### 3) Low-speed ADC

This 16-pin input connector is provided for measuring up to 8 external analog channels with 12-bit resolution.

### 4) Fast ADC

Two SMA connectors accept the differential inputs for the high-speed ADC. When a single input is used the full-scale (FS) swing is 780 mV peak-to-peak. Differential mode swing is 390 mV peak-to-peak.

### 5) RF Clock

This input accepts the high stability bunch crossing clock signal (RF clock). Nominal input level is -3 dBm. The signal is internally AC coupled.

### 6) Fiducial

This input receives the revolution clock (fiducial). Input threshold is adjustable for a number of standard and custom logic formats. Fiducial is triggered by the falling edge. The signal must be stable within one RF period for reliable operation.

### 7) Trigger 1

First of two selectable trigger inputs. Transition threshold is adjustable from **EPICS**.

### 8) Trigger 2

Second trigger input.

### 9) LEDs

Eight front-panel LEDs provide indications of system activity and operating status.

#### **STATUS**

**FPGA** Local bus activity is indicated in green.

#### **SATURATION**

**FIR** filter operation status. Green indicates normal operation, red — output saturation.

#### **CLOCK MISSING**

Red indication when the input **RF** clock is not detected.

#### **DCM LOCK**

Lock status of the signal processing **digital clock manager (DCM)**. Green — locked, red — unlocked.

#### **FIDUCIAL ERROR**

Red indication if the fiducial is missing, at the wrong frequency, or jittering.

#### **DACQ**

Data acquisition in progress is indicated by a green LED.

#### **USER1**

External trigger arming indicated in green.

#### **USER2**

Additional status of the signal processing **DCM**.

### 10) Fast **DAC**

These two differential outputs are generated by the high-speed **DAC**. For proper operation both outputs must be terminated into 50  $\Omega$ . Output swing is 800 mV peak-to-peak.

## 2.4 Rear Panel Features

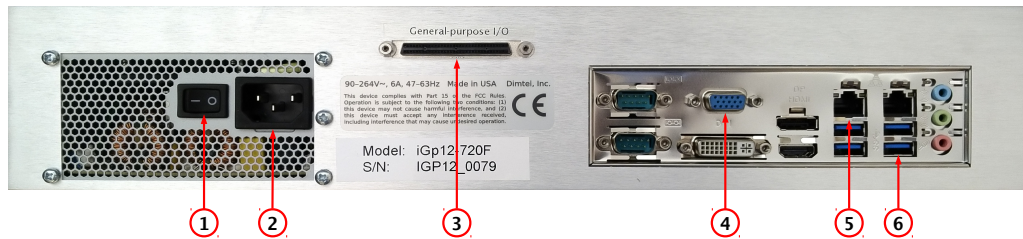


Figure 4: Rear panel features

### 1) Master power switch

Master power switch, turn on for normal operation. In rare cases, this switch can be used to protect the power supply if large facility-wide power line transients are expected.

### 2) Power entry socket

IEC-320 power input socket. Always use an outlet with properly connected protective ground.

### 3) GPIO

This 68-pin connector provides 32 **low-voltage transistor-transistor logic (LVTTL)** signals for front/back-end interface or future expansion.

### 4) Monitor output

Connect a monitor for the initial setup of the iGp12-372F.

### 5) Network

This RJ-45 connector is used to connect the iGp12-372F to the control network. All control and data acquisition communications with the unit are performed via this network connection.

### 6) USB port

Connect USB keyboard for the initial setup of the iGp12-372F.

### 2.5 AC Power Connection

LLRF9 requires a power source of 90 to 264 Vac at 47 to 63 Hz. Maximum input current is 6 A at 115 Vac or 3 A at 230 Vac. Use the AC power cord provided with the unit. Replacement AC power cord must meet the voltage and current requirements listed above.

**WARNING:** If the equipment is used in a manner not specified by the manufacturer, the protection provided by the equipment may be impaired.

### 2.6 Cooling Fan Filter Maintenance

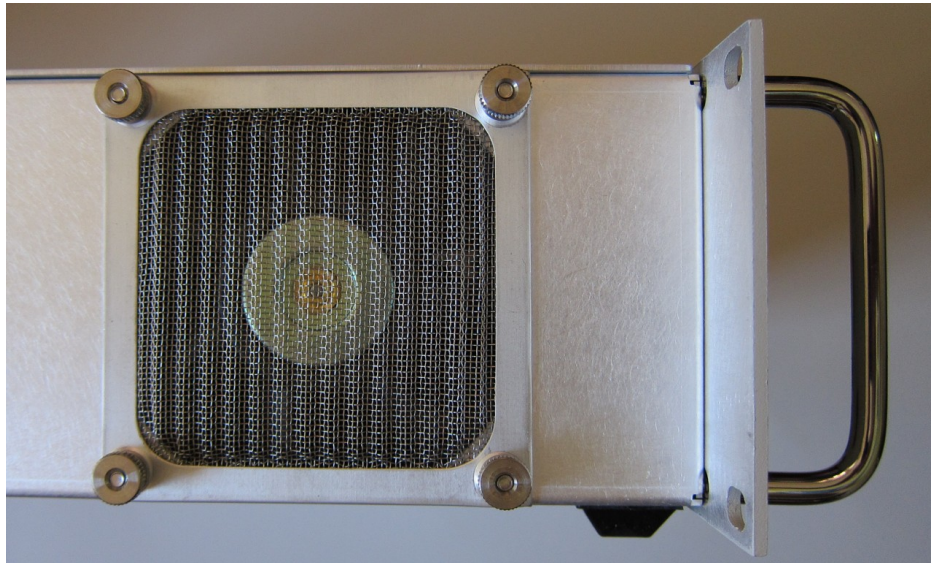


Figure 5: Fan filter mounted using four thumb nuts

Cooling fan is located on the left side of the iGp12-372F. A stainless-steel mesh filter is mounted externally with four thumb nuts.

**WARNING:** Fan filter protects the system from contamination. Operating the unit with a blocked filter or without a filter can lead to overheating as well as to premature failure of the cooling fans.

**WARNING:** Before performing any work on the fan filter, power down the system and unplug the AC power cord. Fan blades are exposed when the filter is removed.

The filter should be periodically serviced to maintain adequate air flow. Vacuuming, washing or replacement are the acceptable maintenance options. Replacement filter is manufactured by Qualtek Electronics Corporation, part number 06325-M.

In order to remove the filter, undo the four thumb nuts. If filter servicing involves washing, make sure the filter is completely dry before reinstallation. To reinstall, orient the filter so that the mesh corrugations are vertical and slide it onto the mounting studs. Reinstall and hand tighten the thumb nuts.

## 2.7 Getting Started

In this section we will present a quick step-by-step guide to get your new feedback processor running in a minimal configuration.

1. Connect **RF** clock at  $-3$  dBm nominal level (Fig. 3, item 5);
2. Connect single-ended high-speed **ADC** input signal to **Ain+** (Fig. 3, item 4). The **FS** swing of this signal should be 780 mV peak-to-peak;
3. Connect a  $50\ \Omega$  terminator to **Ain-** (Fig. 3, item 4);
4. Connect high-speed **DAC** output(s) (Fig. 3, item 10) to the appropriate back-end unit;
5. If single-ended output configuration is used, connect a  $50\ \Omega$  terminator to the unused high-speed **DAC** output;
6. Connect a USB keyboard (Fig. 4, item 4);
7. Connect a video monitor (Fig. 4, item 5);
8. Push the power button (Fig 3, item 1) to turn on the system;
9. Perform the **IOC** setup (see Chapter 3);
10. Push the power button (Fig 3, item 1) to turn the system off;
11. Disconnect the keyboard and the video monitor;
12. Connect the **Ethernet** (10/100/1000BASE-T);

At this point your system is ready for internal testing and use in beam diagnostics and feedback. To extend the configuration beyond the minimum described above one can also connect the external fiducial and trigger signals.

## 3 IOC Setup

Setup program is included in the **IOC** for configuring the important features of the iGp12-372F. The program can be executed locally or remotely. For local execution one must first connect a keyboard (Fig. 4, item 4) and a video monitor (Fig. 4, item 5) to the system. For remote setup, use **ssh** after system bootup to establish connection. In both setup methods the user must login as **root** (initial password is supplied with the system). If the newly received iGp12-372F must be configured remotely (when, for example, a keyboard or a monitor is not available), such configuration can be performed using a

dedicated network. Set up a network consisting of the iGp12-372F, a network hub or a switch, and a remote computer. The iGp12-372F is delivered with the following network configuration:

**IP address** 192.168.1.41  
**Netmask** 255.255.255.0  
**Gateway** 192.168.1.254

Configure the remote computer as follows:

**IP address** 192.168.1.254  
**Netmask** 255.255.255.0  
**Gateway** 192.168.1.41

Once the dedicated network is configured, remote connection to the iGp12-372F can be established by command `ssh root@192.168.1.41`. After logging in locally or remotely, start the setup program as follows:

```
[root@IOC ~]# setup
```

Setup program presents a series of text-mode window dialogs to collect the necessary information for configuring the iGp12-372F. The following settings are configured in this process: timezone, date, time, network, root password, and **EPICS** device name.

Setup dialogs are illustrated in Figure 6. Here we provide a step-by-step guide through the setup process.

**a) Welcome panel**

This panel provides a summary of settings handled by the setup program.

**b) Timezone**

In this panel, select the appropriate timezone.

**c) Date**

Set the correct date using the calendar.

**d) Time**

Set the correct time. The initial setting is taken from the current **IOC** time. If you know the current **IOC** time to be correct press **OK** quickly to retain the setting as closely as possible.

## IOC Setup

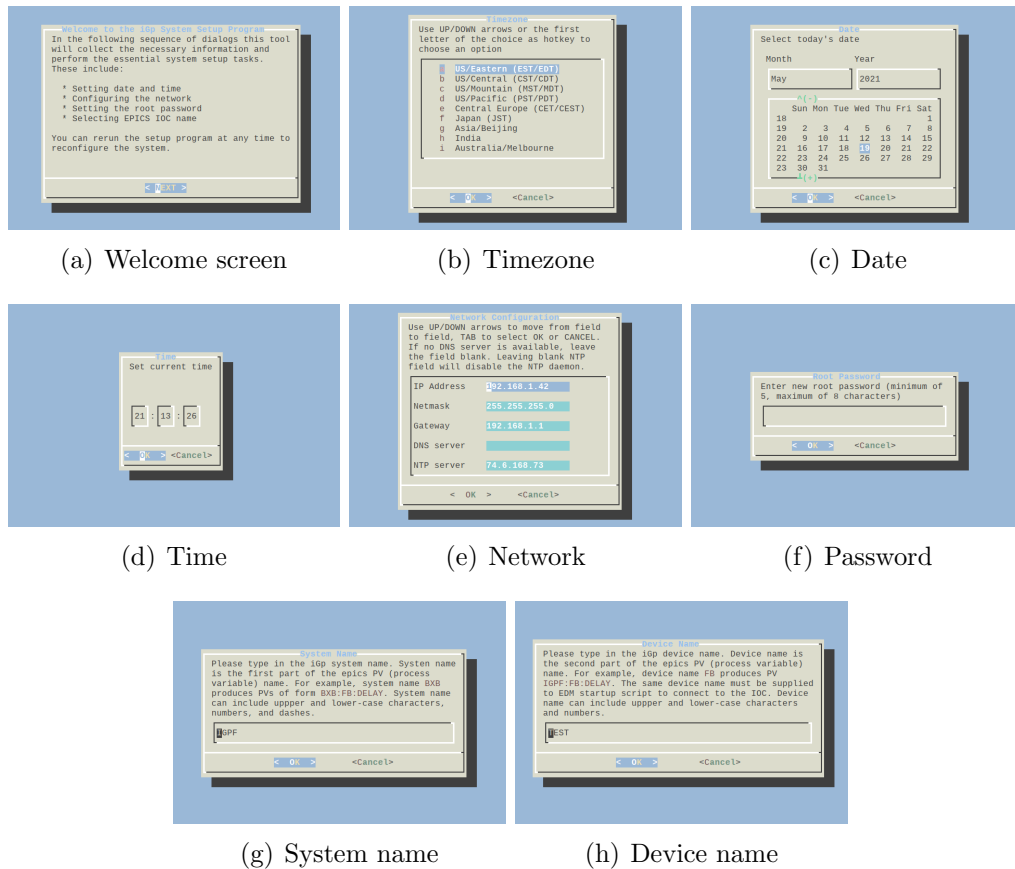


Figure 6: Setup screens

### e) Network

Configure the **IOC** IP address, network mask and the default gateway as provided by your network administrator. The DNS and NTP server addresses are optional.

**NOTE:** Only set the DNS address if the server connection is fast and reliable. Delays in DNS server access can negatively impact the operation of the **IOC**. Typically DNS address is left blank.

### f) Root password

Type in the new root password. The password must 5 to 8 characters in length. Please use the standard rules for selecting a strong pass-



word (Not based on a dictionary word, a mix of upper and lower-case characters and numbers).

**g) System name**

System name is the first part of the **EPICS process variable (PV)**. All **PV** names start with **IGPF:TEST:**, where **IGPF** is the system name. As delivered the iGp12-372F defaults to system name **IGPF** producing **PVs** of the form **IGPF:TEST:DELAY**.

**h) Device name**

Device name is the second part of the **EPICS PV**. All **PV** names start with **IGPF:X:**, where **X** is the device name. As delivered the iGp12-372F defaults to device name **TEST** producing **PVs** of the form **IGPF:TEST:DELAY**. If multiple iGp12-372F units are to be deployed they must be assigned differing device names. For example, one could use device names **X**, **Y**, **Z** for horizontal, vertical, and longitudinal feedback channels.

**NOTE:** *If the setup program is executed remotely and the network address is changed, the **ssh** connection will hang at the end of the process. To connect to the **IOC**, close the existing **ssh** session and start the new connection at the newly assigned **IOC** IP address.*

## 4 Utilities and Selftest

### 4.1 Utilities

The **IOC** includes several utilities designed to communicate to the iGp12-372F directly, without using the **EPICS** softIOC software. These utilities allow the user to access individual **FPGA** registers and memory locations. For register descriptions and address map see Sec. 9. All of the utilities below will accept addresses and data in decimal, hex, if preceded by **0x**, and octal, if the value starts from 0. For example, value 12 can be specified as 12, **0xc**, or 014. In order for these utilities to gain access to the **FPGA** interface the **IOC** process must be terminated. To terminate the **IOC** execute:

```
[root@IOC ~]# pkill -9 st.cmd
```

Here is a short description of the available commands:

## 4.2 Selftest

---

**usbr** <addr>  
Read a single register or memory location.

**usbw** <addr> <val>  
Write a single location.

**usbrblk** <addr> <len>  
Read a block of memory. The data is send to **stdout** and can be redirected into a file.

**usbwblk** <addr> <len>  
Write a block of memory. This utility expects the data from **stdin**.

**memtest** <addr> <len> <cnt>  
Test the register or memory block specified by the **addr,len** combination. The utility generates a block of random numbers and writes it to the **FPGA**. Then the data is read back and compared to the original values. Argument **cnt** specifies the number of test cycles to perform.

## 4.2 Selftest

Another important utility included in the **IOC** is **selftest**. This program performs testing of the main signal path, memories, and peripherals. In order to perform the testing system hardware must be configured as follows:

- Connect the 16-pin ribbon cable between the 8-channel **DAC** (Fig. 3, item 2) and the 8-channel **ADC** (Fig. 3, item 3);
- Connect 476 MHz clock to the **RF** clock input (Fig. 3, item 5);
- Terminate Ain- fast **ADC** input (Fig. 3, item 4);
- Terminate Aout- fast **DAC** output (Fig. 3, item 10);
- Connect a 6 dB attenuator to Aout+ fast **DAC** output;
- Connect the output of the attenuator to Ain+ fast **ADC** input using the supplied SMA-SMA cable;
- Make sure no cable is connected to the general-purpose digital **I/O** port (Fig. 4, item 3);
- Make sure fiducial input is not driven (Fig. 3, item 6);

Once the hardware is configured the test procedure can be initiated by typing **selftest** at the **IOC** command prompt (establish local or remote connection to the **IOC** as described in Sec. 3). Example output of the test is shown below:

```

1 Terminating the IOC
2
3 System information:
4   Function:          feedback
5   Harmonic number: 44
6   Demultiplexing:   UES
7   Revision:         4.04
8   Serial number:    IGP12_0100
9
10          STARTING THE AUTOMATED TEST SEQUENCE
11
12 Testing internal blockRAM: [OK]
13 Testing external SRAM: USB: [OK]
14 Testing general-purpose digital inputs/outputs: [OK]
15 Verifying RF clock presence and DCM lock: [OK]
16
17 Testing low-speed DAC/ADC system
18 Ch(ADC) ADC(mV) DAC(mV) Off(mV) DAC(mV) ADC(mV)
19 0      -2048   -2067     -2    2072    2046
20 1      -2048   -2069      0    2068    2047
21 2      -2048   -2077      2    2072    2047
22 3      -2048   -2075      0    2075    2047
23 4      -2048   -2072     -7    2087    2047
24 5      -2048   -2070     -1    2073    2047
25 6      -2048   -2085      9    2067    2047
26 7      -2048   -2072     -6    2073    2047
27
28 Testing high-speed DAC offset channel
29 Offset DAC(cnt) Fast ADC(cnt)
30 -8192          -188.0
31 -219           0.1
32 8191           200.5
33
34 Testing high-speed DAC output
35 HS DAC(cnt)    HS ADC(cnt)
36 -2048          -1096.6
37 0              0.3
38 2047           1100.0
39
40 Environmental measurements
41 Bulk supply voltage (12V): 11.83
42 Vcc supply voltage (3.3V): 3.30
43 FPGA core supply voltage (1.0V): 1.00
44 Analog 5V supply voltage (5.0V): 5.00
45 Analog 3.3V supply voltage (3.3V): 3.30

```

## 4.2 Selftest

---

46	iGp board temperature (deg C):	24.1
47	FPGA temperature rise (deg C):	1.5
48	ADC clock delay temperature rise (deg C):	7.4
49	DAC clock delay temperature rise (deg C):	7.2

### Line 1

The utility terminates the **IOC** process to gain access to the **FPGA** interface.

### Lines 3–8

Contents of the **FPGA** config register are parsed and printed out.

### Line 12

Test of the data acquisition **blockRAM**.

### Line 13

**SRAM** is tested via the local bus.

### Line 14

General-purpose digital **I/O** is tested.

### Line 15

Presence of the RF clock is verified as well as the lock status of the **DCMs**.

### Lines 16–26

A test of the low-speed **DAC** and **ADC** system. This test uses 8 channels of the **DAC** to drive different voltages and measures the voltages using the **ADC**. The test measures several parameters for each channel. Test code finds the minimum **DAC** setting that does not saturate the **ADC**. **ADC** reading (column 2) and the dead-reckoned **DAC** output (column 3) are printed out in millivolts. Next the **DAC** is set to 0 and the **ADC** reading (offset, column 4) is taken. Finally, the code finds the maximum **DAC** setting that does not saturate the **ADC**.

### Lines 28–32

This portion of the test uses a dedicated offset **DAC** to adjust the output offset of the high-speed **DAC**. The code extracts the reading from the high-speed **ADC** at the positive and negative extremes of the offset **DAC**. Next the code finds the offset **DAC** setting that minimizes the high-speed **ADC** measurement. This setting should be very close to the factory determined value used in **EPICS** to null the high-speed **DAC** output.

**Lines 34–38**

This fragment verifies the response via the high-speed DAC. To do so it finds the ADC response at DAC settings of  $-2048$  and  $2047$ , as well as the DAC setting that produces 0 counts from the ADC.

**Lines 40–49**

Environmental monitor readings are taken and displayed.

The output of `selftest` utility can be redirected to a file and compared to the factory measurement provided in `/root/factory.selftest`.

After testing restart the IOC process by typing:

```
[root@IOC ~]# iGp_start -nofw
```

**NOTE:** *Command-line switch `-nofw` avoids reloading FPGA gateway*

## 5 User Interface

User interface functionality for the iGp12-372F is implemented using **extensible display manager (EDM)**. Software installation CD is designed for seamless installation on a client computer running one of the versions of Linux operating system<sup>1</sup> listed in Table 1.

**Table 1: Supported Linux distributions**

Distribution	Versions
Red Hat Enterprise Linux	5–7
CentOS	5–7
Fedora	14–23

### 5.1 Installation

- Log into the client computer.
- Insert the installation CD into the CD-ROM drive.
- Mount the CD by accepting the "Open in New Window" option or by right clicking on the CD icon and selecting "Mount".

---

<sup>1</sup>Both 32 bit and 64 bit installations are supported.

## 5.2 Starting the EDM

---

- Open a terminal window.
- Issue the following installation command:  
`sudo sh <CD mount point>/install.sh`. Typically CD mount point will be `/media/iGp`. *Note: to install the software one must have superuser privileges, obtained either via `sudo` or `su`.*
- When prompted, enter the user name to install under. If the specified user does not exist it will be created. Default user name is `iGp`.
- When prompted, enter the installation directory. Default directory is `iGp`.
- If the specified user did not exist, the program will prompt for password.
- Wait for the installation process to complete.

The resultant installation can support multiple **IOC**s with distinct device names. Refer to Section 3 for a definition of the device name. Each IOC must be added to the configuration. To do so, log in under the username, specified during software installation (**EPICS** user). Open a terminal and type:

```
[iGp@host ~]$ IOC_add <IP address> <device name>
```

**WARNING: IOC and the client computer must be able to communicate at this point, otherwise IOC\_add will fail.**

After adding one or more new **IOC**s to the configuration the user must log out and log back in for the changes to take effect.

## 5.2 Starting the EDM

Once the software has been installed and the **IOC**s added via `IOC_add` you are ready to start the **EDM**. `iGp12-372F` display panels are opened by the following command:

```
[iGp@host ~]$ iGp_display [-r 8|12] [device name]
```

Note that the device name is optional. If the argument is omitted the command defaults to device name `TEST`. Optional argument `-r` can be used to select 8 or 12-bit versions of the `iGp` displays (`iGp` or `iGp12` respectively). Without the command-line switch, `iGp_display` determines the appropriate version by examining the **FPGA** revision reported by the system.

### 5.3 Bunch Pattern Specification

Several fields in iGp interface (feedback, drive, bunch cleaning, and spectral averaging patterns) use common bunch pattern specification format. The syntactic structure of this format allows three types of elements: single bunch number, range, range with a step. Individual elements should be separated by spaces. Single bunch number element is an integer in the range from 1 to 372. A range is specified as `start:stop`. Range can wrap around, that is if `stop` is smaller than `start`, the range covers `1:stop start:372`. To specify a range with a step use `start:step:stop` construct. For example, drive pattern of `[2:2:372 1:10 13]` includes all even bunches, range from 1 to 10, and bunch 13. If the first element of the pattern is `!`, the pattern is inverted, that is only listed elements are excluded. A pattern of `[!3 4]` includes all bunches except 3 and 4.

Each of the main three pattern fields (feedback, drive, and spectral averaging) generates an enable mask vector, described in more detail in Sec. 5.4. In order to disable pattern strings and to use the masks directly, set the first character of the pattern string to `-` (hyphen-minus).

### 5.4 Bunch Enable Masks

iGp user interface provides two ways of specifying bunches for feedback, drive, and spectral averaging: bunch pattern specification and the mask vector. Bunch pattern specification language described above provides a powerful compact way to define many common patterns. In certain cases, however, it is desirable to have direct access to bunch-by-bunch enable mask vector.

There are three mask vectors in the iGp: `FB:MASK`, `DRIVE:MASK`, and `ACQ:MASK` (each PV starts from the same prefix, e.g. `IGPF:TEST:`). The number of elements in each vector is defined by the harmonic number of the ring. Each vector element defines the enable bit for a particular bunch. Set element value to 1 to enable the action and to 0 to disable.

### 5.5 Data Acquisition Capabilities

iGp12-372F is configured with three independent data acquisition engines: two multi-bunch and one single-bunch. One multi-bunch unit uses on-board **SRAM** memory with 12M samples capacity. The second multi-bunch unit drives a much smaller **blockRAM** memory within the FPGA (276k samples).

## 5.6 Multi-bunch Acquisition Timing

---

Both of these acquisition engines support pre- and post-trigger acquisition, grow/damps, internal and external triggers. In standard operation, **SRAM** is typically used with the external trigger in pre-trigger acquisition mode to capture beam abort transients. Real-time updates on beam stability, RMS, and spectra are normally provided by the BRAM acquisition engine. **SRAM** acquisitions have a maximum update rate of  $2 \text{ s}^{-1}$ , while BRAM supports  $5 \text{ s}^{-1}$ .

The third data acquisition engine acquires 96k samples for a single bunch. This unit supports post-trigger acquisition with internal or external trigger sources. It also captures the excitation output parameters at the start of the acquisition. IOC analysis routines can use that information to compute a beam transfer function. Single-bunch acquisition engine updates once a second.

It is possible, but not advisable to run both multi-bunch acquisition engines from internal trigger at the same time. They will compete for bus bandwidth and CPU processing time, reducing the performance.

## 5.6 Multi-bunch Acquisition Timing

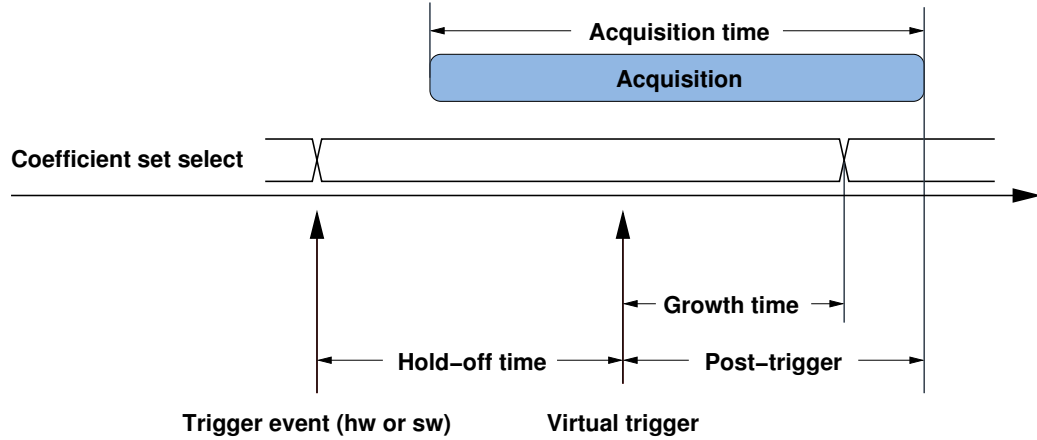


Figure 7: Multi-bunch acquisition process: timing relationships.

Multi-bunch acquisition engines described above support a rich set of triggering and feedback control features. In this section, timing relationships between different steps in the acquisition process are described in detail.



These settings are configured on one of two acquisition control panels, documented in Subsection 5.8.10.

Multi-bunch acquisition process is illustrated in Figure 7. When trigger (external/hardware or internal/software) arrives, several things happen:

- If grow/damp enable is set to the appropriate acquisition engine (SRAM or BRAM), coefficient set select is inverted ( $0 \rightarrow 1$  or  $1 \rightarrow 0$ );
- Hold-off countdown starts (skipped if 0);
- Virtual trigger point is defined by hold-off end time (same as real trigger if zero holdoff);
- Growth time determines the duration for which the coefficient set select is kept inverted after the virtual trigger point;
- Post-trigger time determines the acquisition length after the virtual trigger.

Examples below illustrate the setting for several commonly used measurements

### 5.6.1 Grow/damp

For the grow/damp measurements, the post-trigger time is normally set equal to the acquisition time (easily achieved by pushing *ACQ TYPE* button to select post-trigger acquisition). If the growth rate to be measured is fast, hold-off is set to zero and the growth time is adjusted to for reasonable amplitudes of motion in the open-loop state<sup>2</sup>. If the growth rate is slow, hold-off can be used to wait before acquiring data, allowing the signal to rise out of the noise floor.

### 5.6.2 Post-mortem

For post-mortem data acquisition, one typically configures the acquisition engine in mostly pre-trigger mode, with just a bit of data captured after the trigger. Grow/damp enable is set to OFF and trigger source is external (beam abort signal, etc).

---

<sup>2</sup>If the growth time is too short, no unstable motion is seen (below the noise floor). If, conversely, the growth time is too long, motion can reach very large amplitudes and possibly cause the loss of control or even the loss of beam.

### 5.6.3 Non-invasive monitoring

In this regime, the trigger is set to internal and the grow/damp is disabled. The **IOC** will then start acquisition process, generate a software trigger, wait for the data acquisition to stop, and then read out and analyze the data. Hold-off should be set to zero in this mode, since it has no effect other than slowing down the acquisition process.

For such closed-loop monitoring of beam motion the acquisition is typically configured in the pre-trigger mode, in order to maximize the update rate. When the IOC triggers the acquisition, it can immediately read out the data, instead of waiting 25 ms or more for the acquisition to finish. One important caveat, however, is that the IOC does not keep track of the time difference between the acquisition start and the trigger. For the **SRAM**, with 2 Hz update rate, it takes around 430 ms to read full 18 Mbytes (12 Msamples). Once the memory is read out, the acquisition is started again. At the next polling point (500 ms) the process repeats with the software trigger and memory readout. Thus, there is a window of around 50–70 ms between the acquisition start and the trigger. If that time is too short to acquire the full data set specified, the data will be a combination of new acquisition and previous one.

## 5.7 Display Background Color

Background of EDM display panels can be configured on the per-system basis by setting `PV PANEL:BG`. In the standard configuration, six color choices are available, as illustrated in Figure 8. Color selections and additional colors can be easily configured by editing `colors.list` file.

## 5.8 Display Panels

### 5.8.1 Main Panel

Running `iGp_display` brings up the top-level panel shown in Figure 9. All of the display panels include two buttons on the top: *HELP* and *EXIT*. *EXIT* button will always close the current window. In addition, *EXIT* button on the top-level panel will close the **EDM** session.

Top-level panel consists of three elements: *FEEDBACK ON/OFF* control, *SETUP* button and the status border around this button. The *FEEDBACK ON/OFF* control enables or disables the **FIR** filter output to the **DAC**.

## 5.8 Display Panels

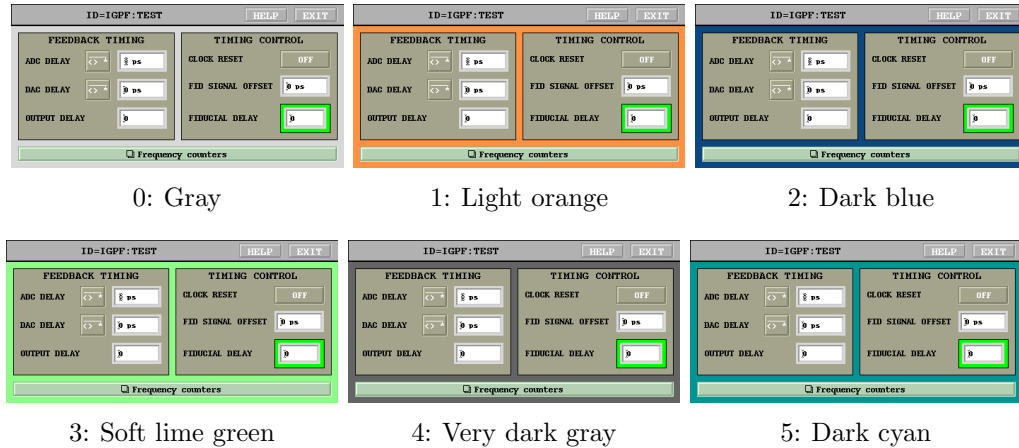


Figure 8: Panel background colors

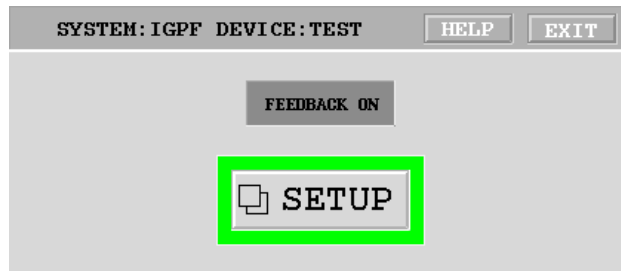


Figure 9: Main (top-level) panel

The status border indicates system operational status summary. **Green** indicates no errors, **yellow** - warning (saturation), **red** - error. The *SETUP* button opens the control panel shown in Fig. 10.

### 5.8.2 Control Panel

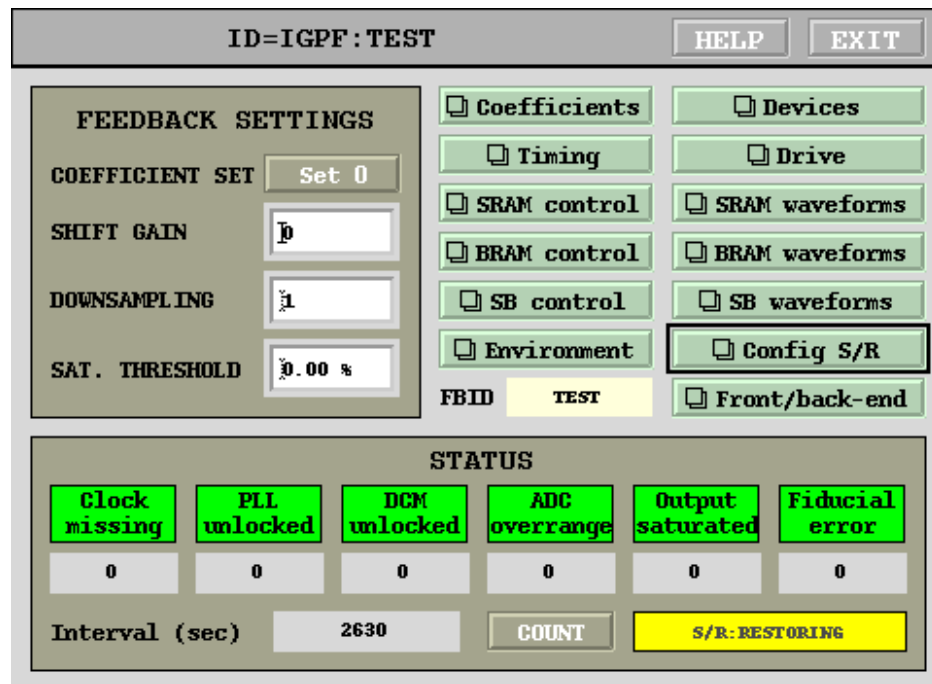


Figure 10: Control panel

This window integrates most important controls for the iGp12-372F.

#### COEFFICIENT SET

Feedback coefficient set selector.

#### SHIFT GAIN

Output gain adjustment. This adjustment is performed by shifting **FIR** output word left by a specified number of positions. Thus, increase by one in this setting doubles the feedback gain.

#### DOWNSAMPLING

Processing channel downsampling factor.

#### SAT. THRESHOLD

iGp12-372F is equipped with an integrating saturation counter. The counter is compared with a threshold duty cycle, expressed here in

percent. A setting of 50% indicates that the output was saturated half the time. On every poll cycle (once a second) the threshold comparison result is read out and the counter is reset to 0. Setting this field to a value of 0 produces single saturation event detector within a polling period.

**Coefficients**

Opens **FIR** coefficients control panel.

**Devices**

Opens the control panel for the integrated devices.

**Timing**

Opens timing control panel.

**Drive**

Opens the drive control panel.

**SRAM Control**

Opens the SRAM acquisition engine control panel.

**SRAM Waveforms**

Opens the waveform display panel for the SRAM acquisition engine.

**BRAM Control**

Opens the BRAM acquisition engine control panel.

**BRAM Waveforms**

Opens the waveform display panel for the BRAM acquisition engine.

**SB Control**

Opens the single-bunch acquisition control panel.

**SB waveforms**

Opens the waveform processing and display panel for the single-bunch acquisition engine.

**Environment**

Opens the environmental monitoring panel.

**Config S/R**

Configuration save/restore panel.

### **FB ID**

Device ID string for the iGp/iGp12 unit controlling the 3-channel combination front/back-end unit (FBE-LT).

### **Front/back-end**

Open general-purpose interface panel, controlling FBE-LT. Value of the device ID string, specified under *FB ID* is used select the appropriate IOC. In full ring installations, with longitudinal, horizontal, and vertical channels, FBE-LT is normally controlled by the longitudinal baseband processor. Using *FB ID* the user can configure all three systems to point to the one active FBE-LT control panel of three possible.

### **Clock missing**

**RF** clock missing indicator.

### **PLL unlocked**

Signal processing **phase-locked loop (PLL)** lock indicator.

### **DCM unlocked**

Local bus **DCM** lock indicator.

### **ADC overrange**

**ADC** input signal exceeds the full-scale range of the device.

### **FIR saturation**

**FIR** filter output saturation duty cycle exceeds the threshold level.

### **Fiducial error**

Indicates missing or jittering fiducial.

### **Interval**

Number of polling cycles (seconds) since the last error counter reset.

### **COUNT**

Reset error and interval counters.

## 5.8.3 Coefficients Panel

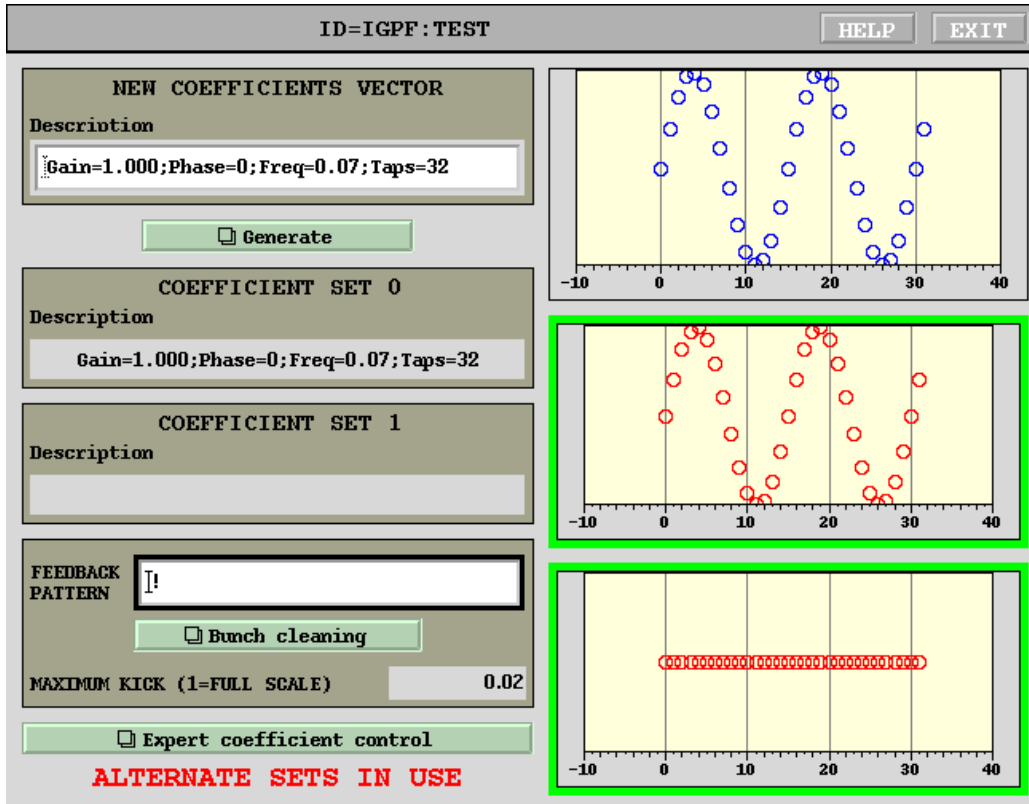


Figure 11: Coefficients panel

iGp12-372F12 supports a total of 4 independent coefficient sets, numbered 0 through 3. Least significant bit of the coefficient set select is controlled from the top-level control panel, as described in subsection 5.8.2. It can also be modified in transient manner by BRAM or SRAM data acquisition engines.

Most significant bit of the coefficient set select can be modified on the bunch-by-bunch basis. Refer to subsection 5.8.4 for the detailed description.

This simplified coefficient control panel is split into three functional groups: new coefficients vector, coefficient set 0, and coefficient set 1. The first group shows the coefficient vector and its description generated using coefficient generator panel (Fig. 14). This vector can be loaded into hardware coefficient sets 0, 1, 2, or 3 using controls on the coefficient generator and expert

## 5.8 Display Panels

coefficients control panels. Colored borders around the hardware coefficient displays indicate the results of coefficient verification. Green shows that the readback is in agreement with the **EPICS** values.

Additional functionality is available in the expert coefficient control panel described in 5.8.4.

Maximum kick monitor captures the largest absolute value of the **DAC** drive over the poll interval (1 second). Figure 12 shows the block diagram of the output section, where feedback kick with bunch-by-bunch enable is summed with the outputs of three independent drive sources. Maximum kick monitoring is performed just before the **DAC** output, after the 3-tap bunch-to-bunch shaper filter.

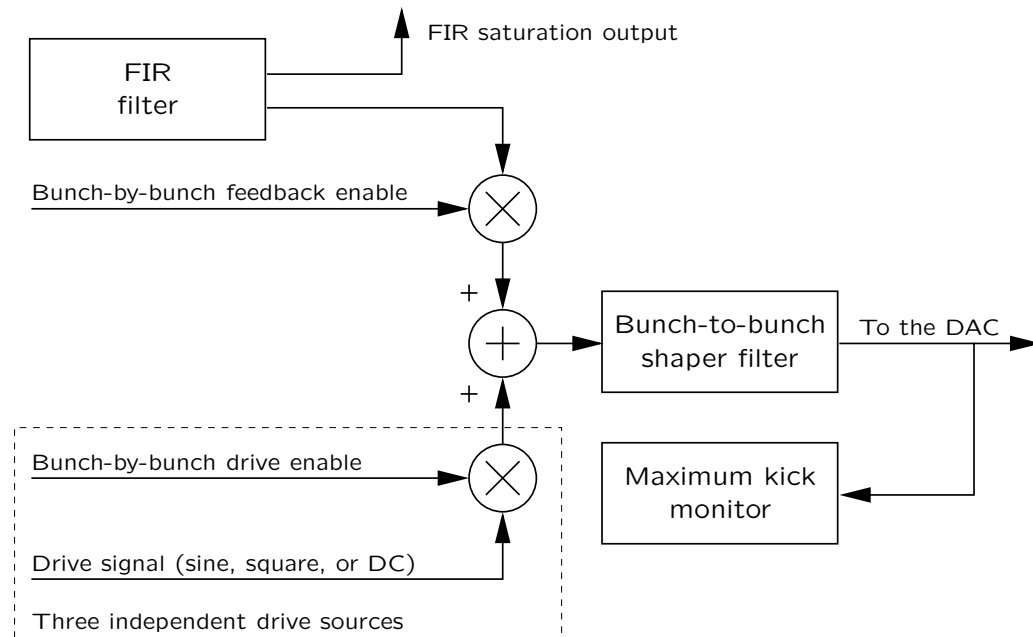


Figure 12: Details of the high speed DAC output section

### Generate

Opens the coefficient generator panel.

### FEEDBACK PATTERN

This field enables the feedback output for the specified bunch pattern.

Bunch specification format is described in Section 5.3.



**Bunch cleaning**

This button opens the bunch cleaning panel.

**MAXIMUM KICK**

This is a measurement of maximum **DAC** magnitude over one second polling interval. Full scale output from the **DAC** corresponds to the readout of 1.0.

**Expert coefficient control**

This button opens the expert version of the coefficient control panel.

**ALTERNATE SETS IN USE**

This informational display is enabled if the *ALTERNATE PATTERN* on the expert coefficients control panel is not empty. It indicates that feedback output is possibly generated using coefficient sets 2/3 in addition to sets 0/1 shown on this panel.

## 5.8.4 Expert Coefficients Control Panel

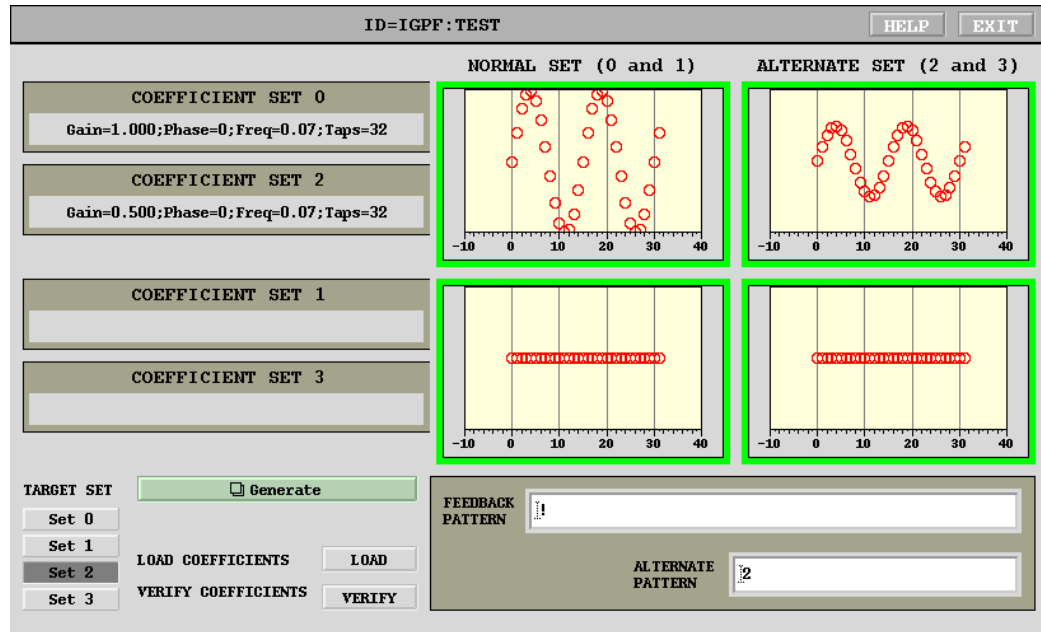


Figure 13: Expert coefficients control panel

This panel presents four coefficient sets supported by iGp12-372F12. Two sets, 0 and 1, are designated “normal”, while remaining two sets (2 and 3) are called “alternate”. Most significant bit of coefficient set select determines whether “normal” or “alternate” set is used. This bit is can be assigned on the bunch-by-bunch basis via *ALTERNATE PATTERN* control. For each bunch included in the feedback pattern, one can assign “alternate” coefficient set by including its number in the *ALTERNATE PATTERN*. For example, with the *FEEDBACK PATTERN* set to 1:20 and the *ALTERNATE PATTERN* set to 1:5:20, feedback correction is applied to bunches from 1 to 20, with bunches 1, 6, 11, and 16 using the “alternate” set (2 or 3) and remaining 16 bunches — the “normal” set (0 or 1).

**Generate**

Opens the coefficient generator panel.

**FEEDBACK PATTERN**

This field enables the feedback output for the specified bunch pattern. Bunch specification format is described in Section 5.3.

**ALTERNATE PATTERN**

This field selects bunches for “alternate” coefficient set. Bunch specification format is described in Section 5.3.

**TARGET SET**

Selects which set the new coefficient vector is to be loaded.

**LOAD COEFFICIENTS**

Loads the new vector to the hardware coefficient set specified by *TARGET SET*.

**VERIFY COEFFICIENTS**

Verifies coefficient sets 0, 1, 2, and 3 against hardware values.

## 5.8.5 Coefficient Generator Panel

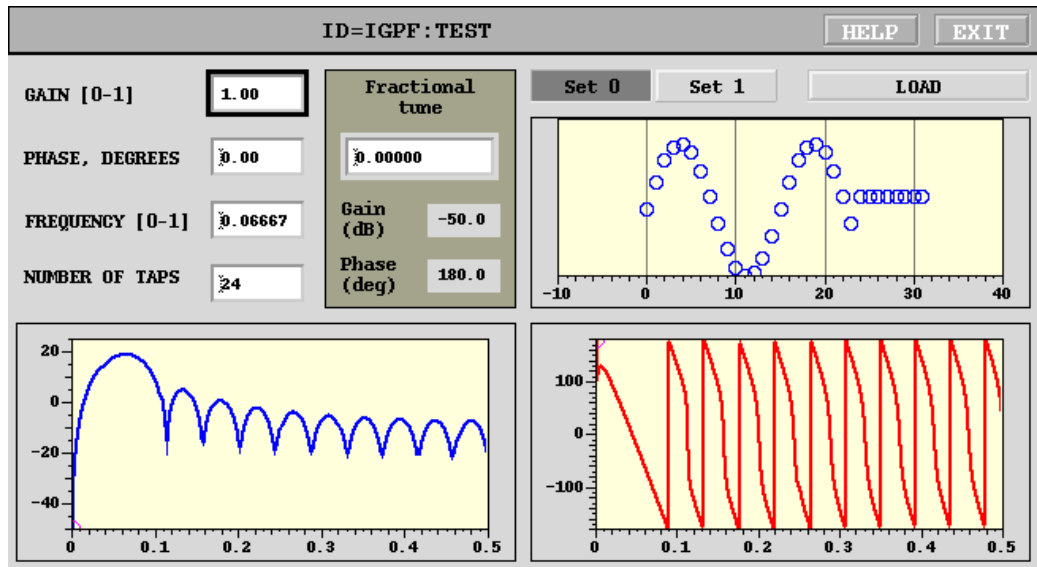


Figure 14: Coefficient generator panel

Coefficient generator panel shown in Figure 14 allows the user to generate feedback processing controllers and explore different delay/gain/bandwidth tradeoffs. This tool generates a coefficient set based on sampling a sine wave. Transfer function of the filter is computed and displayed together with an adjustable marker.

**GAIN**

Filter gain in the range from 0 to 1.

**PHASE**

Filter phase in degrees.

**FREQUENCY**

Center frequency in fractional tune units. Multiply this by the revolution frequency to get the physical center frequency.

**NUMBER OF TAPS**

Number of filter taps.

**Fractional tune**

Marker frequency.

**Gain (dB)**

Gain at the marker frequency in dB.

**Phase (deg)**

Phase at the marker frequency in degrees.

Buttons for selecting target coefficient set and to load the coefficients are included on this panel for the operational ease. See subsection 5.8.4 for full description of their functionality.

### 5.8.6 Drive Sources

Three independent drive sources are available in iGp12-372F **FPGA**, 0, 1, and 2. Each source is based on an **numerically controlled oscillator (NCO)** with sawtooth **frequency modulation (FM)** capability and bunch-by-bunch enable. Three output waveform types are supported: sinusoidal, square, and **direct current (DC)**. Block diagram of a drive source is shown in Figure 15.

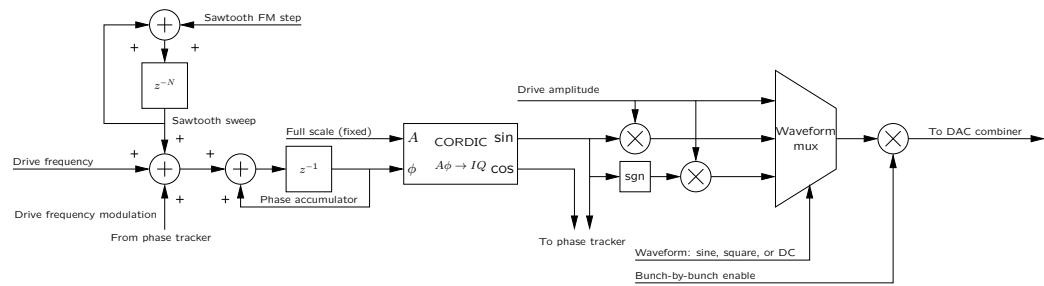


Figure 15: Drive source block diagram

Drive sources have a multitude of applications in the bunch-by-bunch feedback context:

- Back-end timing;
- Kicker gain checking;
- Excitation source for front-end timing;
- Bunch cleaning;
- Single bunch transfer function estimation;
- Single bunch phase tracking.

While three sources are functionally identical when used in standalone mode, there are some differences in hardware and software connections to some of the functions listed above. Single bunch transfer function and active phase tracking utilize drive source 0. Drive source 1 is used in bunch cleaning mode. Drive source 2 can be configured to track drive source 0 under closed loop phase tracking. Drive source control panel shown in Figure 16.

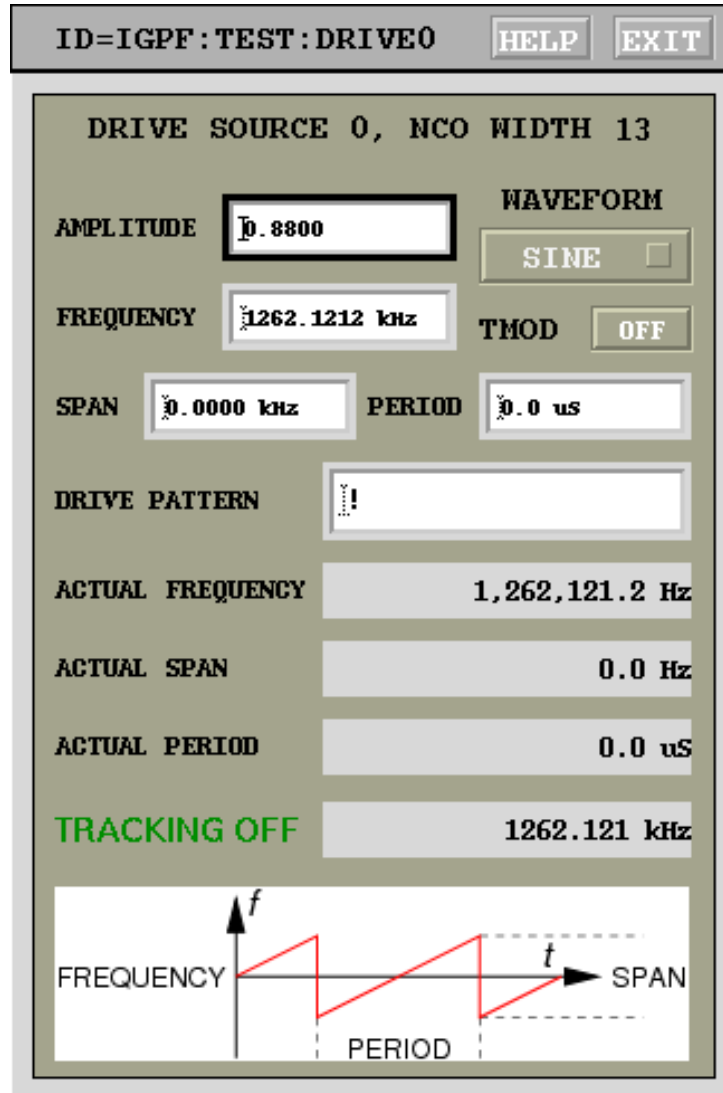


Figure 16: Drive panel

Drive source implementation in the **FPGA** has an adjustable number of **coordinate rotation digital computer (CORDIC)** stages, which determines the quality of the generated sinewave. For smaller rings, the number of stages is set to 13 for all sources, while for larger, more resource-intensive configurations, reduced number of stages is used for source 1 and 2. Source 0 is always set to full 13-bit precision. Number of configured **CORDIC** stages,

as reported by the **FPGA**, is displayed in each drive panel.

### **AMPLITUDE**

Drive amplitude in the range from 0 to 1 (sine or square wave). For DC output mode, the range is  $-1$  to  $1$ .

### **FREQUENCY**

Drive frequency in Hz. Drive signal generator has frequency step size of  $f_{\text{rf}}/2^{30}$ .

### **WAVEFORM**

Waveform selector allows the user to drive the beam with sine, square, and DC signals.

### **TMOD**

Time domain modulation enable. When turned on, enables masking of the drive output with feedback coefficient set select bit. This feature allows the user to perform transient measurements where drive signal is modulated in time. For example, if the system is operating with coefficient set 0 selected, one can configure a grow/damp measurement with 2 ms growth period. If *TMOD* is enabled, triggering the measurement will switch coefficient set select to 1 for 2 ms, enabling drive only for that period.

### **SPAN**

In sine- and square-wave modes the drive generator can be frequency modulated (swept) as illustrated on the bottom of the panel. This field sets the sweep span in kHz. Setting span to 0 disables frequency modulation.

### **PERIOD**

This field sets the sweep period in microseconds. Setting period to 0 disables frequency modulation.

### **DRIVE PATTERN**

Drive pattern string selects bunches to be driven.

### **ACTUAL FREQUENCY**

Drive frequencies are quantized with step size  $f_{\text{rf}}/2^{30}$ . This field reads out the actual drive frequency which is the closest possible approximation to the value, specified in *FREQUENCY*.



**ACTUAL SPAN**

Actual frequency span in use.

**ACTUAL PERIOD**

Actual sweep period in use.

### 5.8.7 Bunch Cleaning Panel

ID=IGPF : TEST		HELP	EXIT
<b>BUNCH CLEANING</b>			
		<b>SAVED VALUE</b>	
<b>AMPLITUDE</b>	<input type="text" value="0.6000"/>	<input type="text" value="0.5002"/>	
<b>FRACTIONAL TUNE</b>	<input type="text" value="0.210000"/>	<input type="text" value="25.0000 kHz"/>	
<b>FRACTIONAL SPAN</b>	<input type="text" value="0.001000"/>	<input type="text" value="0.0000 kHz"/>	
<b>PERIOD</b>	<input type="text" value="10000.0 us"/>	<input type="text" value="0.0 us"/>	
<b>CLEAN PATTERN</b>	<input type="text" value="11:20"/>		
<b>BUNCH CLEANING</b>	<input type="button" value="Disable"/>	<input type="button" value="Enable"/>	

Figure 17: Bunch cleaning panel

Bunch cleaning panel shown in Figure 17 provides a single-point interface to configure both feedback and bunch cleaning controls. Bunch cleaning uses drive source 1, as mentioned in Section 5.8.6. When bunch cleaning is enabled, drive pattern is loaded with the cleaning pattern. Simultaneously, the feedback pattern is set to the complement of the drive pattern, that is each bunch is either driven (cleaned) or controlled by feedback. Drive amplitude, center frequency, sweep span and period are set to the values defined in the cleaning panel. Drive signal is set to a sinewave.

#### AMPLITUDE

Cleaning signal amplitude, 0 to 1.

#### FRACTIONAL TUNE

Fractional tune, 0 to 1.

**FRACTIONAL SPAN**

Sweep span around the center fractional tune. The span must be wide enough to account for tune shifts with bunch current as well as tune changes at different machine operating points.

**PERIOD**

Sweep period. Longer sweep periods produce higher response, but can result in slower cleaning. When sweep is too fast, beam might not have time to respond sufficiently to produce cleaning. Typical sweep periods are in the range of 10–100 ms.

**CLEAN PATTERN**

Bunch pattern to clean — all other bunches are set to feedback.

**BUNCH CLEANING**

Cleaning enable control.

**SAVED VALUE**

When bunch cleaning application is enabled, it saves drive panel settings and the feedback pattern. Saved settings are displayed in the right column. When bunch cleaning is turned off, these saved values are restored.

### 5.8.8 Timing Panel

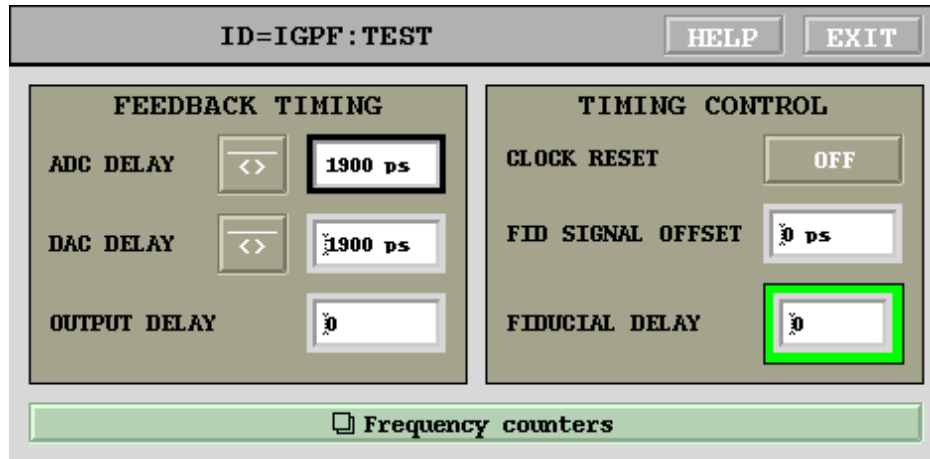


Figure 18: Timing panel

This window provides controls for system timing.

#### ADC delay

High-speed ADC clock delay in picoseconds. This adjustment is independent of the back-end timing (**DAC** delay) and has a range from 0 to  $T_{\text{rf}} - 1$  ps. Rounding to 10 ps adjustment step size is handled automatically.

#### DAC delay

High-speed DAC clock delay in picoseconds. This adjustment is independent of the front-end timing (**ADC** delay) and has a range from 0 to  $T_{\text{rf}} - 1$  ps. Rounding to 10 ps adjustment step size is handled automatically.

#### OUTPUT DELAY

High-speed **DAC** output delay in units of **RF** periods.

#### CLOCK RESET

Pushbutton for resetting feedback processing and data acquisition **PLL**. Push this button if *PLL unlocked* indicator is red and the **RF** clock is present at the iGp12-372F front panel. On rare occasions due to intermittent **RF** clock loss **PLL** might need to be reset even though

lock indicators are green. If **PLL** misbehavior is suspected, check the frequency counters, described below.

### FID SIGNAL OFFSET

This offset sets the relative timing of the input fiducial signal and the fiducial receiving clock. This setting must be optimized after installation. To do so, connect the **RF** clock and the fiducial in the final (operational) configuration. Then, adjust the fiducial delay to find the error range. Let us consider, for example, **RF** frequency of 368 MHz. The **RF** period is 2700 ps. Within one period there should be a range of delays in which the fiducial is jittering across the **RF** clock and the fiducial error indicator is red. By moving the delay in steps of 100 ps find the beginning ( $N_1$ ) and the end ( $N_2$ ) of this range. The optimal setting is at  $(N_1 + N_2)/2 \pm 1350$  ps.

### FIDUCIAL DELAY

Input fiducial delay in single bunch steps. Use to place bunch 1 signal in channel 1 of the data acquisition. For example, if bunch 1 signal is seen in acquisition channel 6, increment this field by 5.

#### 5.8.9 Frequency Counter Panel

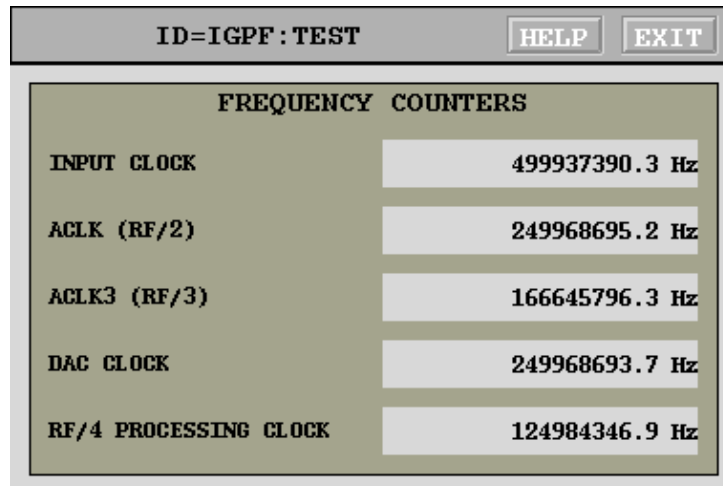


Figure 19: Frequency counter panel

## 5.8 Display Panels

---

iGp12-372F gateway uses internal local-bus clock to measure the frequencies of various signal processing clocks. Raw input clock as well as some **PLL**-derived ones are monitored.

### **INPUT CLOCK**

This clock should correspond to your **RF** frequency.

### **ACLK (RF/2)**

Signal processing **PLL** output at  $f_{\text{RF}}/2$ .

### **ACLK3 (RF/3)**

**PLL** clock at  $f_{\text{RF}}/3$ , used for data acquisition.

### **DAC CLOCK**

**DAC** clock signal at  $f_{\text{RF}}/2$ .

### **RF/4 PROCESSING CLOCK**

Filtering and control at  $f_{\text{RF}}/4$ .

### 5.8.10 Data Acquisition Controls

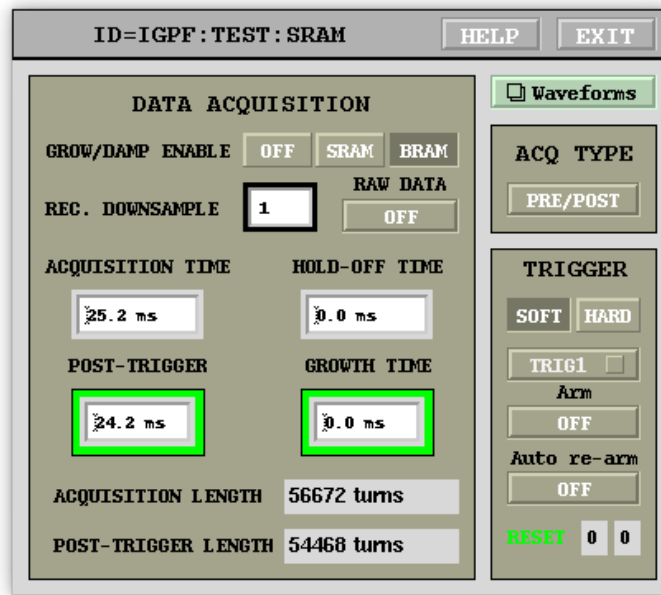


Figure 20: Data acquisition control panel

Each data acquisition engine is managed by an individual control panel. Panels are identical, with the only difference being the time units. **SRAM** panel uses milliseconds, while microseconds are indicated on the BRAM one.

#### GROW/DAMP ENABLE

Enables coefficient set switching during data acquisition. Only one data acquisition engine can control the coefficient set.

#### REC. DOWNSAMPLE

Acquisition channel downsampling factor. This downsampling process is completely decoupled from the processing channel downsampling.

#### RAW DATA

This button dumps the raw data from the last acquisition into a waveform PV (:SRAM:RAW or :BRAM:RAW), so that it can be read out by external interface tools.

### **ACQUISITION TIME**

Acquisition time duration. Maximum acquisition length is defined by the **RF** frequency, downsampling factor, and memory depth (12M samples for **SRAM**, 276k samples for **BRAM**).

### **HOLD-OFF**

Time duration to keep the coefficient set select inverted before data acquisition. This can be used to delay data acquisition and give slow oscillations time to grow.

### **POST-TRIGGER**

Portion of the data acquisition process that takes place after the trigger even. This value can range from 0 (pure pre-trigger acquisition) to the full acquisition time value (pure post-trigger).

### **GROW LENGTH**

Time length to hold the coefficient set select inverted during data acquisition, if enabled by the grow/damp selector.

### **ACQUISITION LENGTH**

Computed acquisition length is reported in this field in the units of turns. Note that with downsampling, number of turns corresponds to the actual acquired data, not real-time.

### **POST-TRIGGER LENGTH**

Computed post-trigger length is reported in this field in the units of turns.

### **Waveforms**

Opens the appropriate waveform display panel.

### **ACQ TYPE**

This toggle can be used to quickly switch the acquisition to post-trigger mode. If post-trigger mode is enabled, value of the **POST-TRIGGER** field is not used - all data is acquired after the trigger.

### **TRIGGER SOFT/HARD**

Acquisition trigger source, software or hardware.

### **TRIG1/TRIG2/DRIVE/SAT**

Selects hardware trigger source. Hardware triggers can be generated



from external inputs (TRIG1 and TRIG2), drive signal generator frequency sweep, and feedback FIR saturation signal (after thresholding described in 5.8.2).

**Arm**

External trigger is only valid if the acquisition system is armed. Single-event acquisitions on the external trigger can be performed by pushing this button.

**Auto re-arm**

This option re-arms the acquisition system after each data readout. This allows for continuous updates of beam data triggered by external signal. Note that the first acquisition on external trigger must be armed manually.

**Trigger capture**

Two bit readouts in the lower right capture the external trigger input states at the time the last acquisition was triggered. These are FPGA-internal trigger levels — if the falling edge is selected for a particular signal, captured level is inverted relative to the physical input state.

## 5.8 Display Panels

### 5.8.11 Waveforms Panel

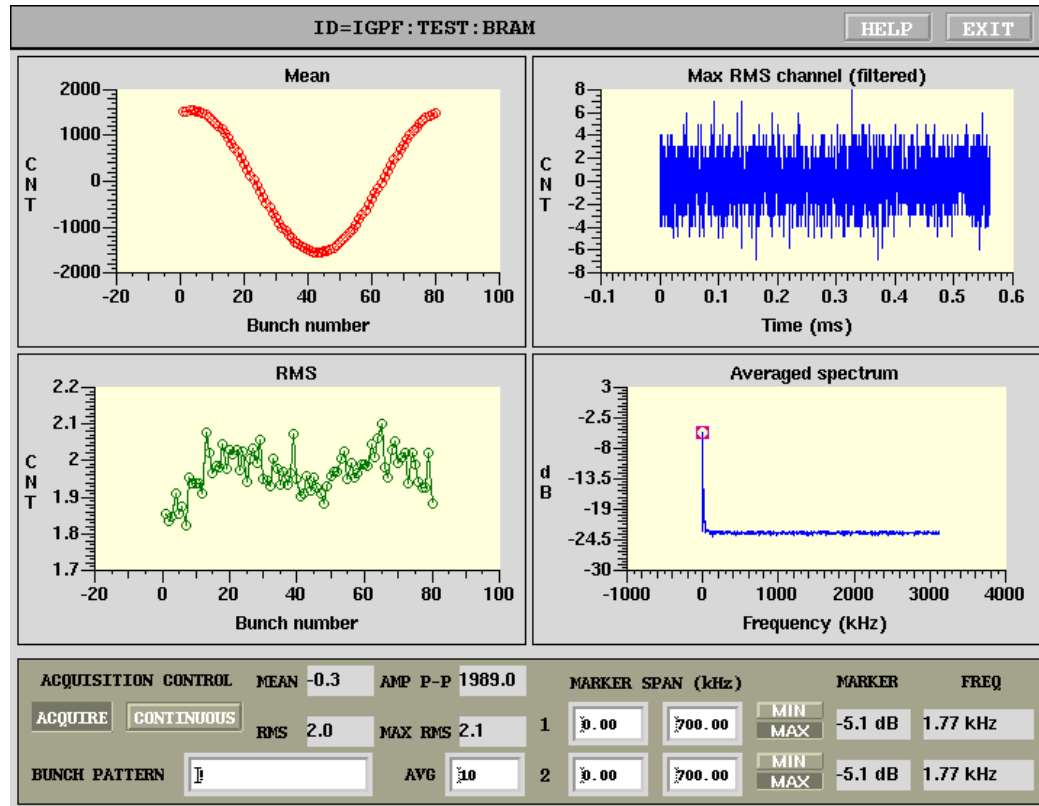


Figure 21: Waveforms panel

A set of **IOC** subroutines postprocesses the data in the real-time and provides four concise plots displayed in the waveform panel shown in Figure 21. The four plots are: bunch-by-bunch mean and **root mean square (RMS)** of bunch oscillations, time-domain signal of a bunch with the largest **RMS**. The last plot is obtained by performing the **fast Fourier transform (FFT)** on each of the bunches (specified by a selection pattern) and quadratically averaging the resulting spectra. This plot aliases all coupled-bunch eigenmodes to a frequency span from DC to  $\omega_{\text{rev}}/2$ . Such a spectrum allows the operator to very quickly check how well the system damps the coupled-bunch motion.

### DATA ACQUISITION CONTROL ON/OFF

Data acquisition enable. Turn this control to on to acquire and post-process the data.

**CONTINUOUS/SINGLE**

Selects between single acquisition mode and continuous updates.

**MEAN**

Overall mean of the data.

**RMS**

Overall **RMS** of the data.

**AMP P-P**

Peak-to-peak amplitude of the gap transient.

**MAX RMS**

Largest **RMS** around the turn.

**BUNCH PATTERN**

Spectrum averaging bunch pattern in the format described in Sec. 5.3. This field allows the user to select a subset of bunches for quadratically averaging in the spectrum plot. Using this field one can examine single-bunch spectra or select only filled buckets to improve signal-to-noise ratio. Averaged spectra of any subset of buckets can be examined with this control field. Normally, this pattern is set up to match the ring filling pattern.

**MARKER SPAN**

Two independent markers allow the user to search for peaks or notches in the spectrum. Lower and upper bounds of a frequency search range in kHz are specified for each marker. Within this frequency range the IOC code searches the averaged spectrum and, based on the search type, finds maximum (peak) or minimum (notch) value and frequency.

**MIN/MAX**

Spectrum search type: minimum or maximum. Maximum search is used for tracking positive peaks, e.g. in driven tune monitoring or in open loop. When the feedback loop is closed a notch typically forms in the spectrum at the tune frequency. Minimum search can then be used to provide parasitic non-invasive tune readout.

### AVG

Spectrum averaging constant. Value roughly corresponds to the averaging time constant expressed in spectrum updates. For example, setting this field to 10 produces exponential time constant of 10 seconds at 1 Hz update rate. Value of 1 disables averaging.

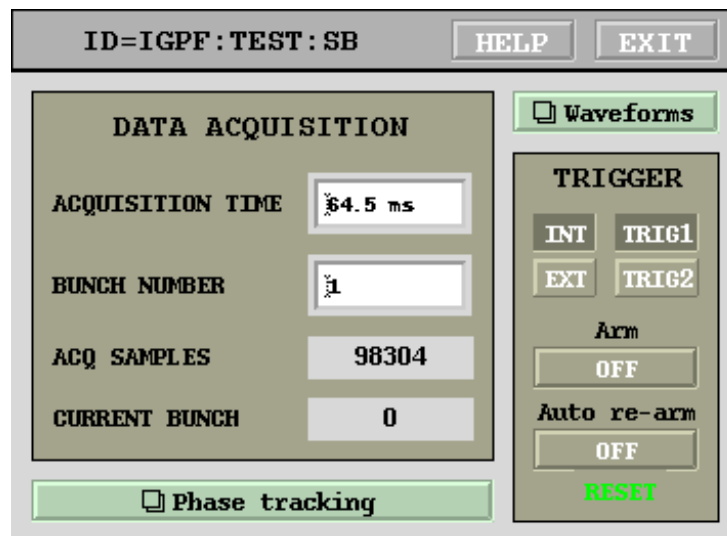
### MARKER

Marker amplitudes in dB.

### FREQ

Marker frequencies in kHz.

#### 5.8.12 Single Bunch Acquisition Controls



The image shows a graphical user interface for single bunch acquisition controls. At the top, a status bar displays 'ID=IGPF:TEST:SB' and has 'HELP' and 'EXIT' buttons. The main panel is divided into two sections. The left section, titled 'DATA ACQUISITION', contains four labeled input fields: 'ACQUISITION TIME' with a value of '4.5 ms', 'BUNCH NUMBER' with a value of '1', 'ACQ SAMPLES' with a value of '98304', and 'CURRENT BUNCH' with a value of '0'. Below these fields is a green button labeled 'Phase tracking'. The right section, titled 'TRIGGER', contains four buttons: 'INT', 'TRIG1', 'EXT', and 'TRIG2'. Below these are two more buttons: 'Arm' and 'OFF'. At the bottom of the right section are two buttons: 'Auto re-arm' and 'OFF'. A green 'RESET' button is located at the bottom right of the panel.

Figure 22: Single bunch acquisition control panel

This panel controls the parameters of the single bunch acquisition engine.

### ACQUISITION TIME

Acquisition time duration. Maximum acquisition length is defined by the revolution frequency.

### BUNCH NUMBER

Bunch number (starting from 1) to acquire.

**ACQ SAMPLES**

Computed acquisition length is reported in this field.

**CURRENT BUNCH**

Number of the bunch, captured in the last acquisition.

**Waveforms**

Opens the appropriate waveform display panel.

**TRIGGER INT/EXT**

Acquisition trigger source, internal or external.

**TRIG1/TRIG2**

Selects external trigger source input.

**Arm**

External trigger is only valid if the acquisition system is armed. Single-event acquisitions on the external trigger can be performed by pushing this button.

**Auto re-arm**

This option re-arms the acquisition system after each data readout. This allows for continuous updates of beam data triggered by external signal. Note that the first acquisition on external trigger must be armed manually.

## 5.8.13 Single Bunch Waveforms Panel

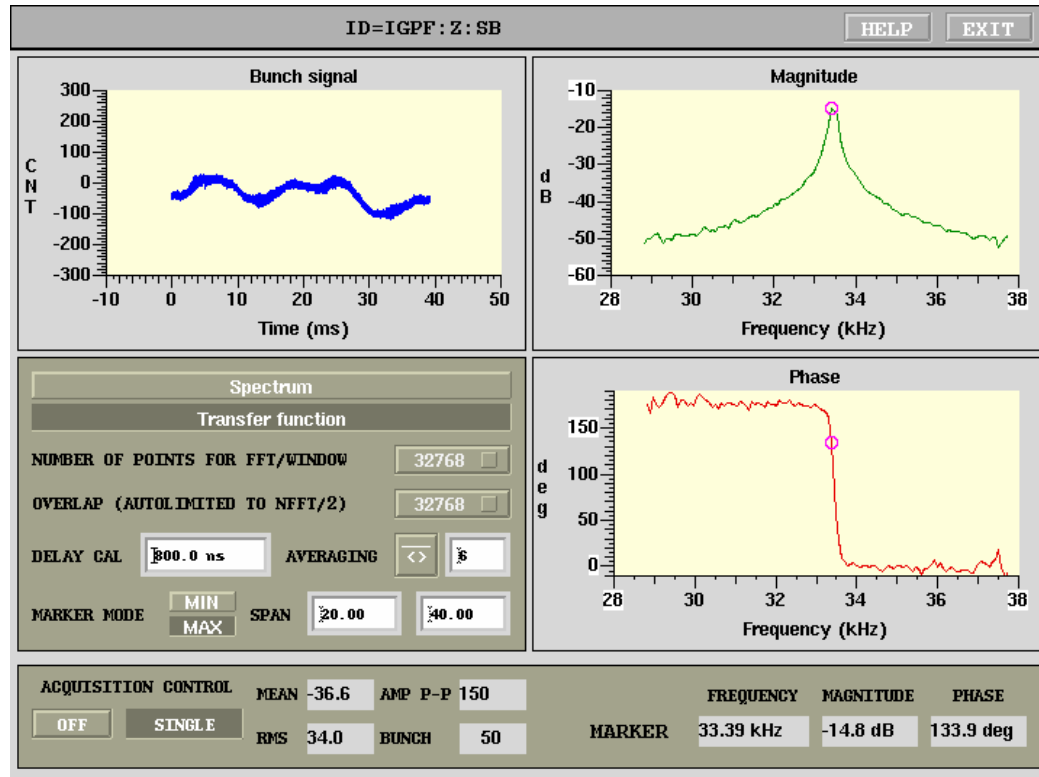


Figure 23: Single bunch waveforms panel

A set of **IOC** subroutines postprocesses the data in the real-time and generates three plots displayed in the waveform panel shown in Figure 23. The three plots are: time-domain record of bunch motion, frequency-domain magnitude and phase.

Frequency domain plots can operate in two modes: spectrum and transfer function. In the spectrum mode, power spectral density estimate is computed from the raw bunch data using Welch's averaged, modified periodogram method. Data vector is divided into sections, defined by the FFT length, with the overlap up to half the length. Each section is windowed using a Hamming window. FFT spectra are then averaged to obtain the magnitude vector. In the transfer function mode, the **IOC** computes the excitation waveform  $x$ , then estimates the external transfer function to beam signal  $y$  using

the quotient of cross power spectral density  $P_{xy}$  and power spectral density of  $x$ ,  $P_{xx}$ .

**Spectrum/Transfer function**

This control selects between the two frequency domain processing modes, described above. In the spectrum mode, phase plot is disabled. When transfer function mode is selected, plotted frequency range is automatically clipped to the span, covered by the excitation waveform. If the drive waveform sweeping is turned off, transfer function plots are blanked.

**NFFT**

Selector for the FFT and window length. This defines the frequency resolution.

**OVERLAP**

Section overlap. This is automatically limited to half of NFFT setting. Can be usually left at the maximum value of 32768.

**DELAY CAL**

A fixed delay offset can be added to the phase plot, to compensate for physical transport delays between the **DAC** output and the **ADC** input.

**AVERAGING**

Spectrum averaging constant. Value roughly corresponds to the averaging time constant expressed in spectrum updates. For example, setting this field to 10 produces exponential time constant of 10 seconds at 1 Hz update rate. Value of 1 disables averaging.

**MARKER SPAN**

A marker can be used to search for peaks or notches in the magnitude plot. Lower and upper bounds of a frequency search range in kHz are specified for each marker. Within this frequency range the IOC code searches the averaged spectrum and, based on the search type, finds maximum (peak) or minimum (notch) value and frequency.

**MIN/MAX**

Spectrum search type: minimum or maximum.

### ACQUISITION CONTROL ON/OFF

Data acquisition enable. Turn this control to on to acquire and post-process the data.

### CONTINUOUS/SINGLE

Selects between single acquisition mode and continuous updates.

### MEAN

Mean of the data.

### RMS

**RMS** of the data.

### AMP P-P

Peak-to-peak amplitude.

### BUNCH

Bunch number.

### FREQUENCY

Marker frequency in kHz.

### MAGNITUDE

Marker magnitude in dB.

### PHASE

Marker phase in degrees.

#### 5.8.14 Phase Tracking Panel

A single bunch phase tracker is implemented in iGp12-372F using a tuned receiver with an adjustable bandwidth. Block diagram of the phase tracking loop is shown in Figure 24. A **Digital Down Converter (DDC)** detects single bunch oscillation relative to cosine and sine outputs of the drive source 0. An adjustable length **Cascaded Integrator Comb (CIC)** filter integrates  $I$  and  $Q$  signals for some number of turns. Longer integration times correspond to narrower bandwidths and slower loop update rates. Next, a **CORDIC** is used to convert from cartesian to polar coordinates. Phase output of the **CORDIC** measures the phase shift between the drive excitation and the beam response. That signal is compared to a setpoint and the error signal is applied to the **NCO** drive frequency via an integrator. In closed loop



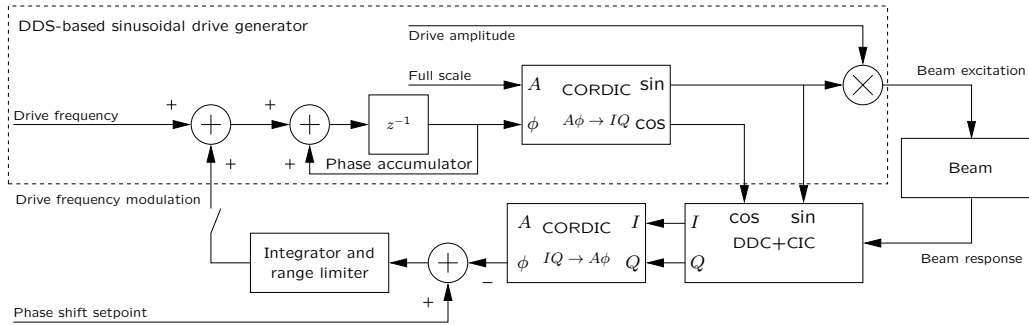


Figure 24: Phase tracker block diagram

operation this system maintains a fixed phase shift between the excitation and the response by adjusting the drive frequency. When phase shift setpoint is properly configured, such loop tracks the tune in the accelerator.

Phase tracker has many uses in accelerator operation and studies. It can be used to create constant-amplitude excitation in presence of fast or slow tune frequency changes. In the open-loop mode it is frequently used to detect bunch response in a parameter sweep (such as kick timing, front or back end phasing, and so on).

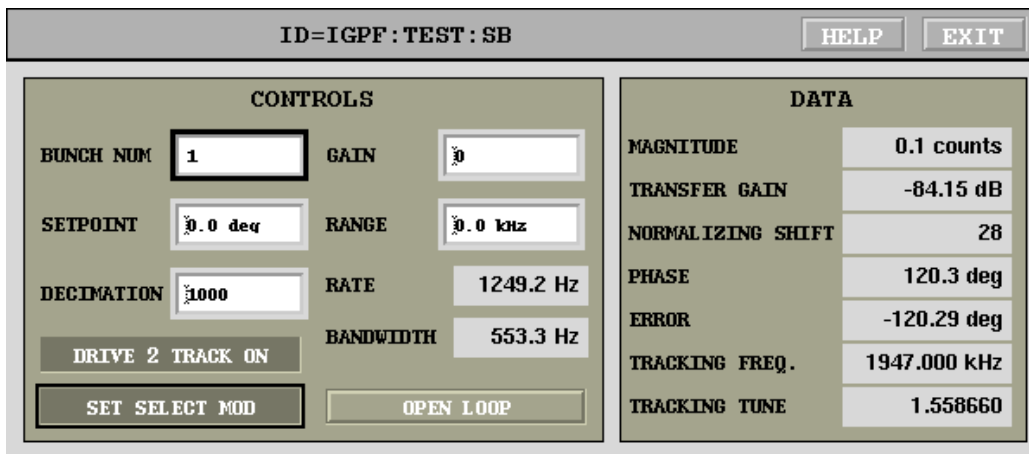


Figure 25: Phase tracking panel

Control panel for the phase tracker is shown in Figure 25. Settings, as

## 5.8 Display Panels

---

well as a couple of useful calculated parameters are grouped in the **CONTROLS** block.

### **BUNCH NUM**

Bunch number selector, same channel as the one on the single bunch acquisition controls.

### **GAIN**

Phase tracking loop gain setting. Integer values, normally set to negative values — beam transfer function phase slope is negative, so a positive phase error means that the excitation is above the resonance and the frequency needs to be reduced.

### **SETPOINT**

Phase tracking loop setpoint.

### **RANGE**

Maximum frequency adjustment range (bipolar) from the open loop drive frequency setting.

### **DECIMATION**

**CIC** integration length (in turns). This parameter controls the feedback loop update rate and phase measurement bandwidth. A standard rule of thumb is that closed loop control bandwidth is roughly 1/10 of the measurement bandwidth.

### **RATE**

Computed **CIC** output update rate (controlled by the **DECIMATION** parameter).

### **BANDWIDTH**

Computed phase measurement bandwidth (controlled by the **DECIMATION** parameter).

### **DRIVE 2 TRACK**

This control allows the user to configure drive source 2 to follow closed-loop frequency correction of drive source 0 in real time. This feature is designed for two bunch tune shift measurements.

**SET SELECT MOD**

This control enables modulation of phase tracking loop closure with the coefficient set select. Used together with the TMOD feature of the drive source, this provides for transient phase tracking. On a hardware or software trigger, multibunch data acquisition can switch coefficient set select LSB from 0 to 1. Then, drive source is turned on and closed loop phase tracking is enabled. After a predefined period, the system goes back to normal operation.

Phase tracker measurements, polled at 5 samples per second, are presented in the **DATA** block. Note that phase tracker hardware can operate at higher update rates — only EPICS scalar monitoring is limited to the 5 SPS readout rate.

**MAGNITUDE**

Detected bunch oscillation magnitude in ADC counts.

**TRANSFER GAIN**

Calculated from the **MAGNITUDE** above by normalizing to the drive amplitude and converting to decibels.

**NORMALIZING SHIFT**

Phase tracker module includes a normalizer block between the **CIC** and the **CORDIC**. This block ensures that maximum dynamic range is achieved by the coordinate rotation. It shifts left *I* and *Q* values until one of these is above half full scale. This service parameter shows the actual left shift in bits.

**PHASE**

Detected bunch oscillation phase.

**ERROR**

Error between the setpoint phase and the detected value.

**TRACKING FREQUENCY**

This value reads out the tracking frequency in the closed loop mode. In the open loop condition it is identical to the drive source 0 frequency.

**TRACKING TUNE**

Same as the frequency above, but in fractional tune units (normalized by the revolution frequency).

## 5.8 Display Panels

### 5.8.15 Environmental Monitoring Panel

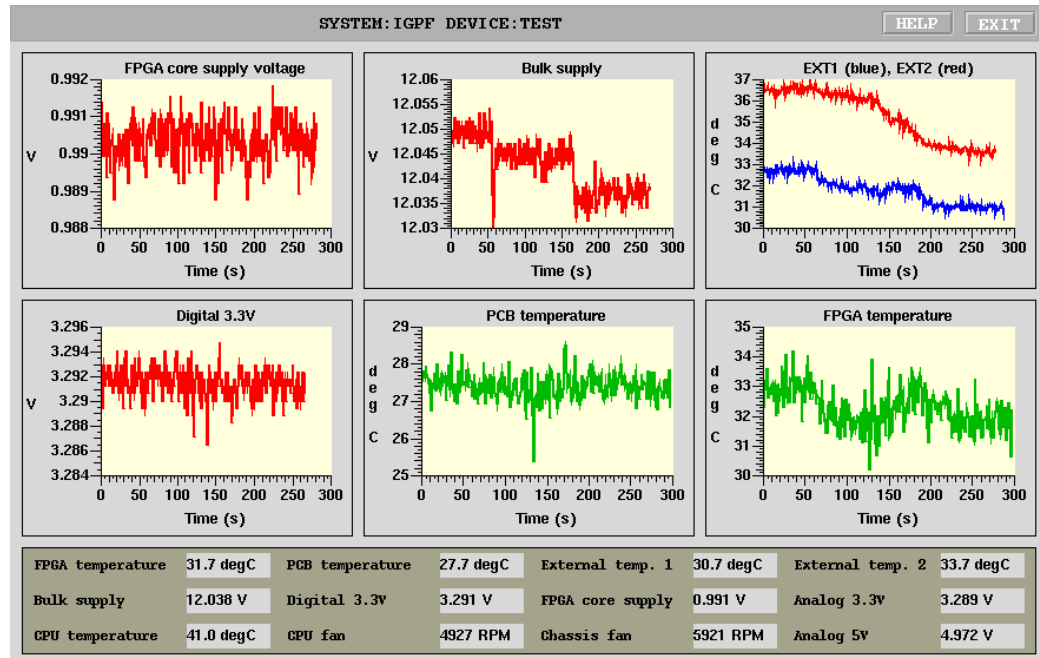


Figure 26: Environmental monitoring panel

The environmental monitoring panel shown in Figure 26 provides instantaneous readouts and five minute histories of five supply voltages and four temperatures in the iGp12-372F system. It also monitors IOC CPU temperature and two cooling fan speeds: one mounted on the IOC CPU and the main chassis fan.

**NOTE:** *The user must check the device temperatures after the unit is installed in the final location to make sure sufficient airflow reaches the internal devices.*

**NOTE:** *Check device temperatures periodically and compare to measurements made during installation. Elevated temperatures can indicate blocked air intake filter!*

The iGp12-372F can continue operating with the main chassis fan stopped, however such operation puts high stress on certain key semiconductor devices. Prolonged operation with non-functional main chassis fan should be avoided.

## 5.8.16 Device Controls Panel

The screenshot shows the 'ID=IGPF:TEST' panel with the following controls:

DELAY LINES		THRESHOLDS AND OFFSETS		
ADC CLOCK	50	FIDUCIAL	STD	-400.0 mV
		NIM	<input type="checkbox"/>	ARB
FIDUCIAL CLOCK	96	TRIGGER 1	STD	1650.0 mV
		LVTTTL	<input type="checkbox"/>	ARB
FIDUCIAL	182			RISE
		TRIGGER 2	STD	-1420.0 mV
		ECL	<input type="checkbox"/>	ARB
				FALL
DAC CLOCK	0	DAC OFFSET		0.00 mV
SHAPER FIR ([C0 2~17 C2])		C0	0	C2
				0

On the right side, there are buttons for: AD5644 DACs, MAX1202 ADC, GPIO, TIMING, POWER AMPS, MASKS, and INFO.

Figure 27: Device controls panel

Device controls panel provides control interface to several peripherals integrated in the iGp12-372F. There are four adjustable delay units for controlling the high-speed **ADC**, **DAC**, and fiducial timing.

**WARNING:** While these delay controls can be used to adjust various clock timings, one is strongly advised to perform the adjustments via the timing panel. Timing panel controls interface to a sophisticated IOC routine which in turn computes the necessary settings of the four delay units.

Thresholds and offsets area is dedicated to adjusting logic level thresholds for the fiducial and trigger inputs. Three control elements are provided for each signal. STD/ARB selects between a pre-defined signal standard or an arbitrary threshold. In the arbitrary threshold mode, a value in the range of  $\pm 3000$  millivolts can be entered to the right of the selector. When standard mode is selected, threshold value is determined by the menu selection on the left. Available standards include NO DC, **NIM**, **emitter coupled logic (ECL)**, LVPECL, LVDS, LVTTTL, and TTL/2 (0 to 2.5 V).

For two external triggers one can select the active edge — rising or falling. Internally this is implemented as inversion of the trigger signal before it is delivered to the acquisition units. Thus, trigger level capture in **SRAM** and **BRAM** is sensitive to these two settings.

DAC OFFSET field is used to trim the DC offset of the high-speed DAC. This value is configured at the factory and should not need adjustment.

**FPGA** gateway for iGp12 includes a 3-tap output shaper **FIR**. Out of three coefficients ( $C_0$ ,  $C_1$ ,  $C_2$ ), central coefficient  $C_1$  is fixed at unity ( $2^{17}$  full scale), with the other two adjustable in the range from  $(-2^{17}+1)$  to  $(2^{17}-1)$ . By adjusting  $C_0$  and  $C_2$  one can pre-distort the **DAC** output to compensate for the response of the back-end section (power amplifier, kicker).

From the device control panel one can open the following seven panels:

- AD5644 DACs, section 5.8.18;
- MAX1202 ADC, section 5.8.19;
- GPIO, section 5.8.20;
- TIMING, section 5.8.8;
- POWER AMPS, section 5.8.21;
- MASKS, section 5.8.17;
- INFO, section 5.8.25.

### 5.8.17 Mask Panel

This panel allows the user to quickly examine bunch-by-bunch enable masks for feedback, drive, and spectral averaging. When generated from the appropriate pattern strings these correspond directly to the user's specification. However one can also use channel access to directly set these masks. Mask display panel allows one to verify that the actual masks are in agreement with the expected patterns.

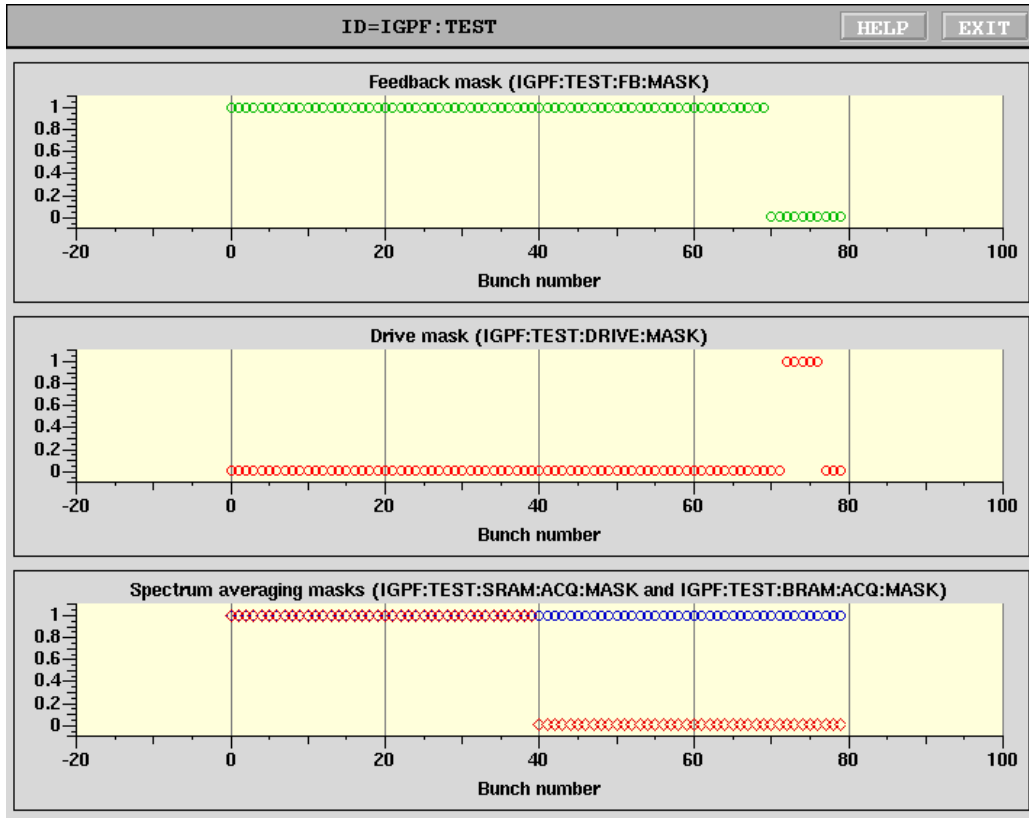


Figure 28: Bunch enable masks panel

### 5.8.18 AD5644 8-channel DAC Panel

Eight general-purpose **DAC** outputs are controlled from this panel. Each output has 14-bit resolution with  $\pm 3$  V drive capability into high impedance. With  $50\ \Omega$  loads the output levels are reduced by a factor of 2.

Reference selection and test mode switch are reserved for factory testing.

### 5.8.19 MAX1202 8-channel ADC Panel

This panel provides readouts of the eight 12-bit **ADC** channels updated at 1 Hz. The input signals are low-pass filtered to 1 kHz before sampling.

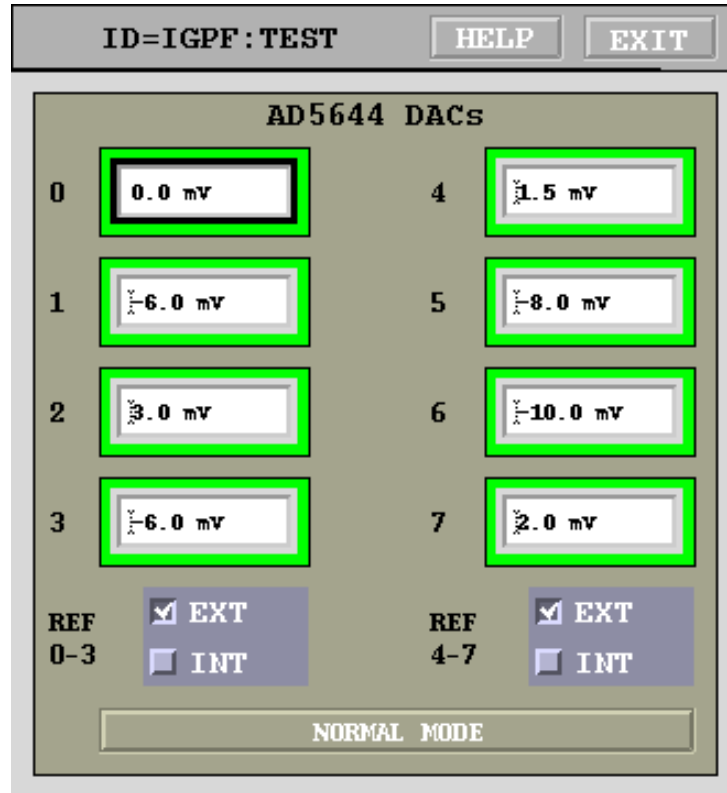


Figure 29: 8-channel DAC panel

### 5.8.20 GPIO Panels

General-purpose **I/O** control panel consists of three different panels, one for bit-by-bit GPIO, one for the single-channel front/back-end (FBE), and one for the three-channel front/back-end (FBE-LT). Using the choice buttons on the top of the panel one can select one of the three drivers. Selected driver is connected to the GPIO pins and the appropriate panel is displayed in the window.

**WARNING:** Front/back-end drivers set several **I/O** pins as outputs. Make sure correct hardware is connected to the GPIO port before selecting these drivers! Improper driver selection may cause damage to the output pins and the connected external devices.

Bit-by-bit control panel, shown in Figure 31 provides individual bit controls for 32 **LVTTL** signals available on the rear panel. Each bit control in-



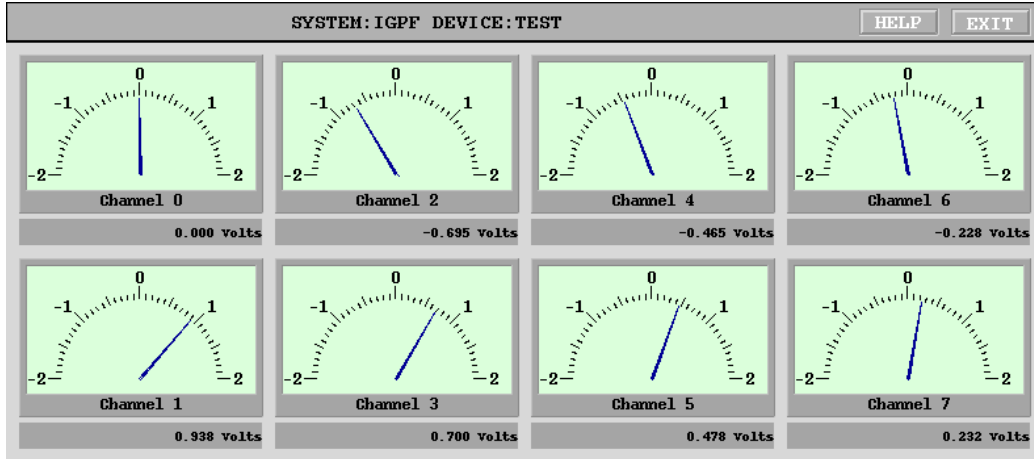


Figure 30: 8-channel ADC panel

cludes output value (0 or 1), direction (In or Out), and the readback. When the signal is configured for output the readback should reflect the output value.

Figure 32 shows the front/back-end panel. This panel is split into two portions: front/back-end registers and the phase servo loop. The register controls include front and back-end phase and attenuation. Phase adjustments are performed using a 12-bit DAC with the allowed control range from 0 to 4095. Front-end phase register setting is provided as a readout labeled FRONT-END PHASE DAC SETTING. When the phase servo loop is open the register is directly driven by the front-end phase control setpoint. Closed phase servo loop adjusts the register value around the setpoint to center the ADC signal. Front and back-end attenuation settings adjust digital attenuators in steps of 0.5 dB. Control values are in dB and are rounded automatically. Full adjustment range is from 0 to 31.5 dB.

Phase servo loop can be closed and opened by the LOOP CLOSURE buttons. Depending on which zero crossing the phase shifter is centered different loop polarities need to be selected using LOOP SIGN. LOOP GAIN parameter must be adjusted to optimize the loop response in terms of noise, bandwidth, and overshoot. Typically the optimization can be carried out with beam by stepping the input offset and observing the phase servo response using a stripchart tool. INPUT OFFSET is used to zero out possible

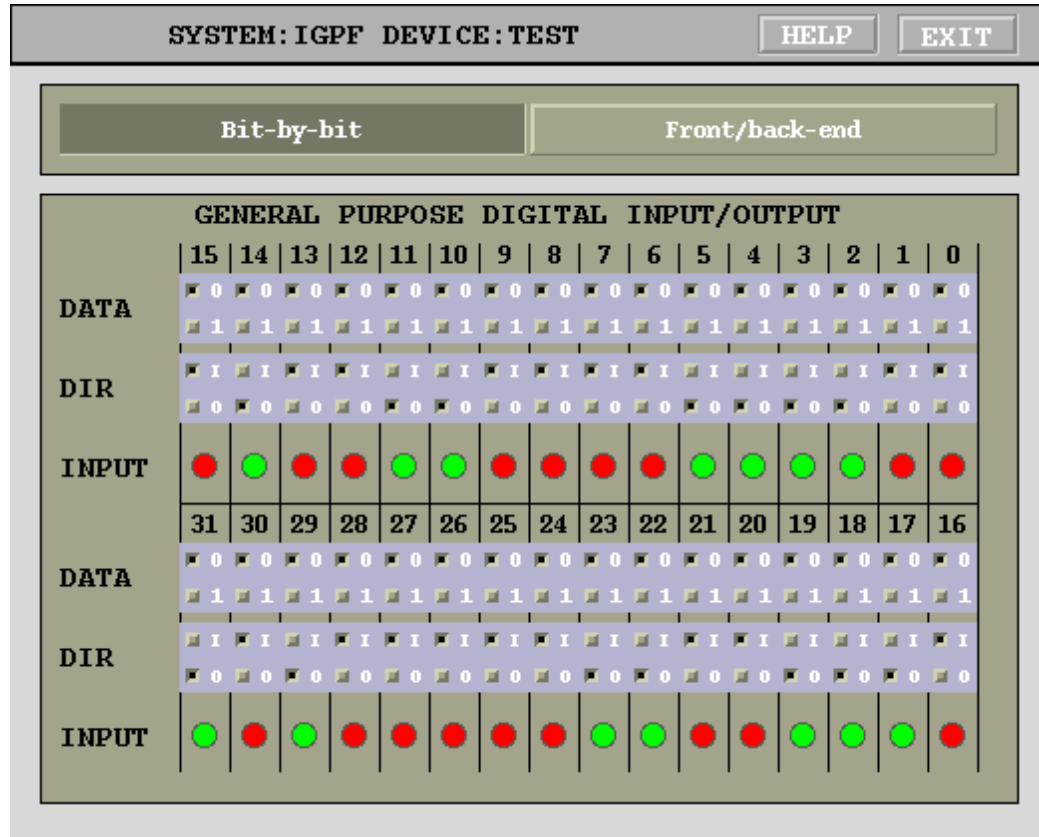


Figure 31: General-purpose I/O panel: bit-by-bit driver

mixer offset or, alternatively, to introduce an offset. Such an offset is typically used when the beam loading transient is highly asymmetric to avoid reaching **ADC** saturation prematurely. SATURATION LIMIT parameter defines the maximum deviation from the phase setpoint that can be introduced by the phase servo. This limit must be set below  $\pi/2$  to make sure the phase servo does not transition from one zero crossing to another.

Readouts on the bottom provide information on the **ADC** input offset and the phase servo output. The bar indicator and the readout on the left show the output of a **CIC** decimator which averages 500 ms worth of **ADC** input samples (0.9 Hz  $-3$  dB bandwidth). The indicator on the right shows the phase servo correction applied to the setpoint. This indication can be used

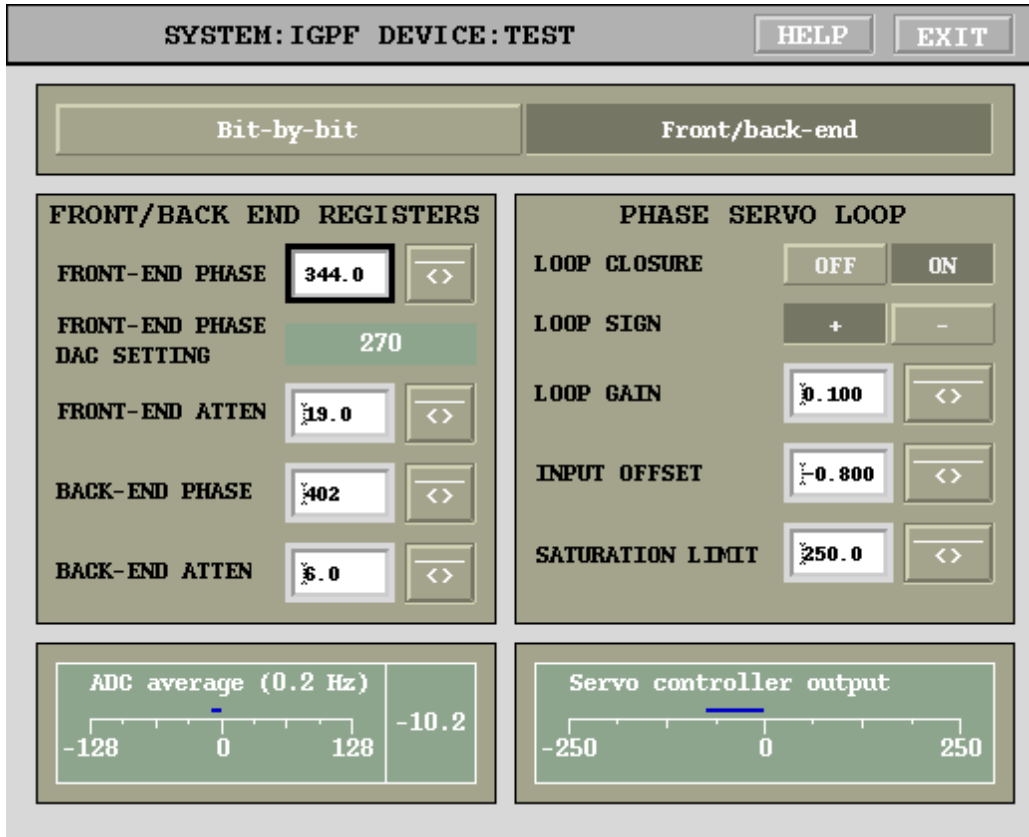


Figure 32: General-purpose I/O panel: front/back-end driver

to adjust the setpoint for near-zero correction. Such near-zero correction is optimal for closed/open phase servo loop transitions and for low beam current operation.

Panel for the all-axis front/back-end (FBE-LT) is shown in Fig. 33. FBE-LT has three front-end channels and one back-end channel. Each channel has an attenuator and a carrier phase shifter. Channels are labeled as horizontal, vertical, and longitudinal. Attenuator and phase shifter controls are identical to those described above for the FBE driver.

Since the phase servo loop needs to measure the longitudinal ADC and then to adjust the longitudinal phase shifter, FBE-LT should be connected to the longitudinal iGp12-372F.

ID=IGPF:TEST

HELP
EXIT

Bit-by-bit
FBE (1 channel)
FBE-LT (3 channel)

**FRONT/BACK END REGISTERS**

LONG. PHASE	<input type="text" value="0.0"/>	<span>&lt;&gt; *</span>
LONG. ATTEN	<input type="text" value="0.0"/>	<span>&lt;&gt; *</span>
HORIZ. PHASE	<input type="text" value="0"/>	<span>&lt;&gt; *</span>
HORIZ. ATTEN	<input type="text" value="0.0"/>	<span>&lt;&gt; *</span>
VERT. PHASE	<input type="text" value="0"/>	<span>&lt;&gt; *</span>
VERT. ATTEN	<input type="text" value="0.0"/>	<span>&lt;&gt; *</span>
BACK-END PHASE	<input type="text" value="0"/>	<span>&lt;&gt; *</span>
BACK-END ATTEN	<input type="text" value="0.0"/>	<span>&lt;&gt; *</span>

0
0
0

**PHASE SERVO LOOP**

<b>LOOP CTRL</b>		<b>LOOP SIGN</b>		<b>HOR</b>	<b>VERT</b>
<span>OFF</span>	<span>ON</span>	<span>+</span>	<span>-</span>	<b>TRK</b>	<b>TRK</b>
GAIN <input type="text" value="1.00"/>		<span>OFF</span>	<input type="text" value="0.0"/>	<span>OFF</span>	<span>OFF</span>
				<span>ON</span>	<span>ON</span>

**DS1822 ROM/THERMOMETER**

STATUS	<span>Present</span>	CHECKSUM	<span>OK</span>
SERIAL	<input type="text" value="00000027b1c2"/>		
DEVICE ID	<input type="text" value="0x22"/>		
TEMPERATURE	<input type="text" value="34.75 degC"/>		

<span>OFF</span>	FAN SPEED	<input type="text" value="1652 RPM"/>
<span>ON</span>	TEMPERATURE SETPT	<input type="text" value="36.00"/>

**ADC average**

-2048      0      2048

**Phase servo output**

-100      0      100

Figure 33: General-purpose I/O panel: FBE-LT driver

System supports tracking of the phase shifter settings for horizontal and vertical channels (set up as amplitude detectors) together with the longitudinal channel. Two enable switches (*HOR TRK* and *VERT TRK* control the feature for horizontal and vertical planes, respectively.

FBE-LT integrates a Maxim DS1822 device which provides a unique serial number as well as temperature monitoring. DS1822 status and checksum

should read *present* and *OK* when FBE-LT is connected and the appropriate driver is selected.

Interface between iGp12-372F and FBE-LT also allows control and monitoring of the FBE-LT cooling fan. Fan speed is displayed in RPM. Speed control can operate in two modes: open and closed-loop. In the open-loop mode the fan is set to the maximum speed. In the closed-loop mode a **proportional integral (PI)** controller adjusts the fan speed to maintain the temperature, measured by DS1822, close to the temperature setpoint. This temperature control method is limited by the ambient temperature at the low end and the still-air device temperature. Selecting too low a setpoint can result in positive temperature errors with the fan running at the maximum speed. Similarly, too high a setpoint can generate negative temperature errors at the minimum fan speed.

When selecting the temperature setpoint one should collect data on the system temperature with the loop open over several days. Select a setpoint higher than the maximum temperature observed in this experiment. Observe closed-loop operation and raise the setpoint if the ambient temperature swings cause the unit to run hot. The goal is to use the lowest possible setpoint while still maintaining temperature regulation.

### 5.8.21 Power Amplifiers Panel

Several power amplifier interfaces are supported by iGp12-372F. Control and readout panels for these are collected in the power amplifiers panel shown in Fig. 34. The first panel allows to control MILMEGA power amplifiers (AS0102-200 and AS0102-250) via USB or serial connection. The amplifier must be connected to iGp12-372F prior to running setup script, which detects the amplifier and configures the interface appropriately. Next, there are two panels for monitoring two MILMEGA amplifiers via rear-panel DB-15 connector. Custom cable can be provided by Dimtel, Inc. to connect two amplifiers to the 8-channel ADC port of iGp12-372F. Finally, there are two panels for monitoring two Mini-Circuits ZT-102 power amplifiers. These are monitored by the 8-channel ADC and require a special cable.

### 5.8.22 MILMEGA serial/USB

iGp12-372F **IOC** includes driver support for MILMEGA power amplifier, models AS0102-200 and AS0102-250. **IOC** can communicate with the am-

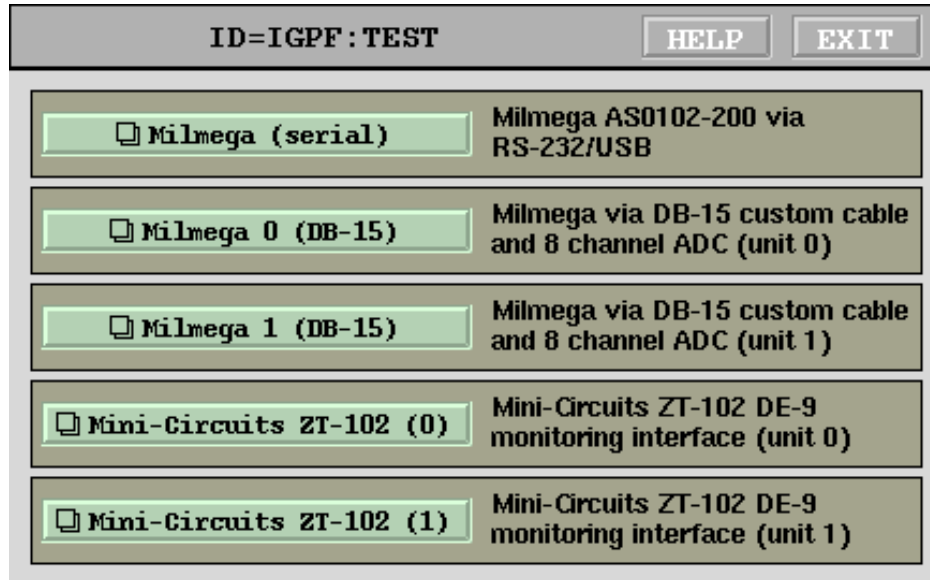


Figure 34: Power amplifiers panel

plifier via **USB** or RS-232 serial port. Control and monitoring functions are combined on the power amplifier panel shown in Fig. 35. Two control functions are available: line and **RF**. Line power switch turns main power supply on and off. That also controls the state of the cooling fans. **RF** control enables actual amplifier operation. Both controls will show inconsistencies between **EPICS** setting and amplifier readback in magenta. Two power meter readings are monitored at 1 Hz: forward and reverse power. Internally, Milmega amplifiers store calibration tables for these power monitors. POWER METER CALIBRATION FREQUENCY setting allows the user to select calibration value appropriate for the output frequency used.

### 5.8.23 MILMEGA DB-15

These panels are configured to monitor four parameters each on two MILMEGA amplifiers. RF status and fault latch are monitored, as well as forward and reflected power. For proper readout of the power levels, calibration of slope and offset parameters is needed.

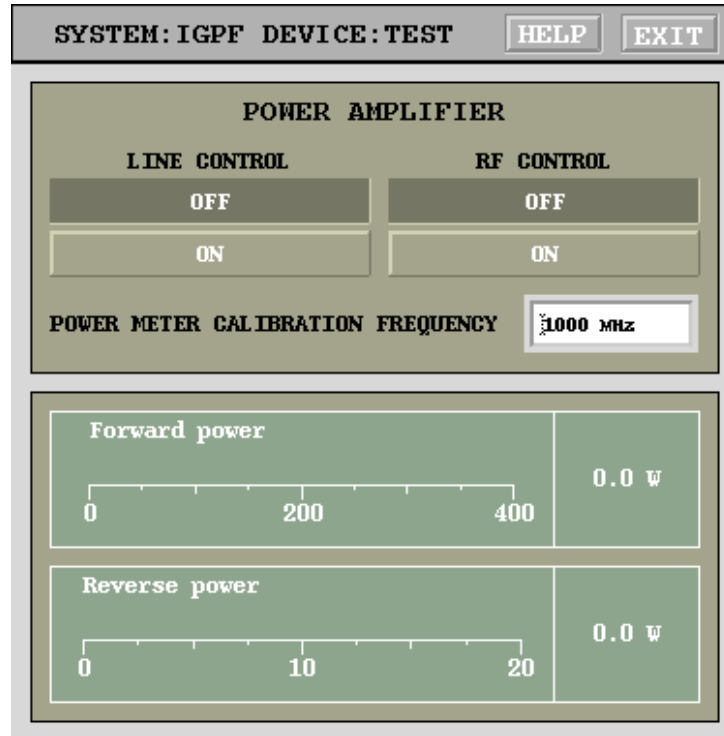


Figure 35: MILMEGA amplifier control and monitoring panel (serial/USB)

#### 5.8.24 Mini-Circuits ZT-102

These panels are configured to monitor four parameters each on two Mini-Circuits ZT-102 amplifiers. Fault output and internal temperature are monitored, as well as forward and reflected power. For proper readout of the power levels, directional coupler loss factors need to be calibrated.

#### 5.8.25 Information Panel

Information panel summarizes some system configuration parameters. Harmonic number, gateway revision, and gateway type are read from the FPGA configuration register during IOC startup. These values are used to look-up the appropriate accelerator in an internal table and to select the nominal RF frequency. IP address of the IOC is also displayed.

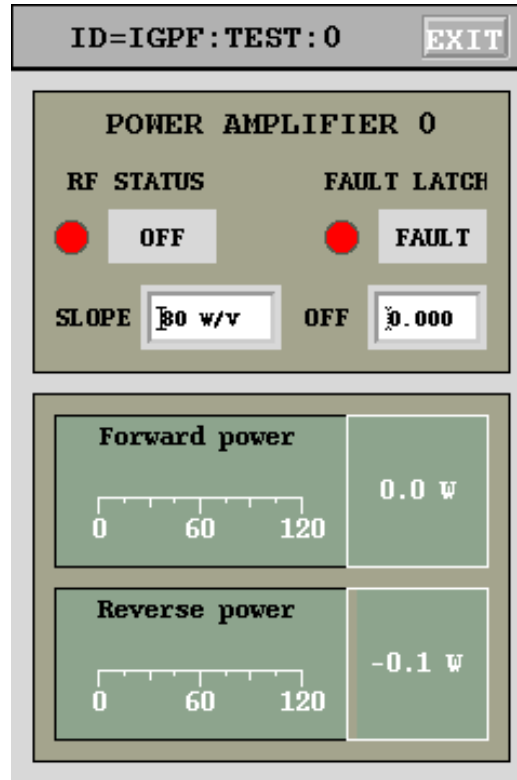


Figure 36: MILMEGA amplifier monitoring panel (DB-15)

## 6 External Software Interface

Software distribution CD includes several tools extract iGp12-372F data for analysis and processing in external software programs. These tools are written for MATLAB® and use [LabCA package](#) for communicating with [EPICS](#).

### iGp\_read

Top-level data acquisition tool. This script will read out data from the iGp12-372F, create a timestamped directory, and save the data in a file called `gd.mat`. This file is in a format, compatible with MATLAB® data analysis tools, developed for ALS/LNF-INFN/SLAC longitudinal feedback systems.

### get\_data

This function reads out the raw data vector from the [IOC](#) and returns it to the caller. A single argument is the [PV](#) root name, e.g. `IGPF:TEST:.`



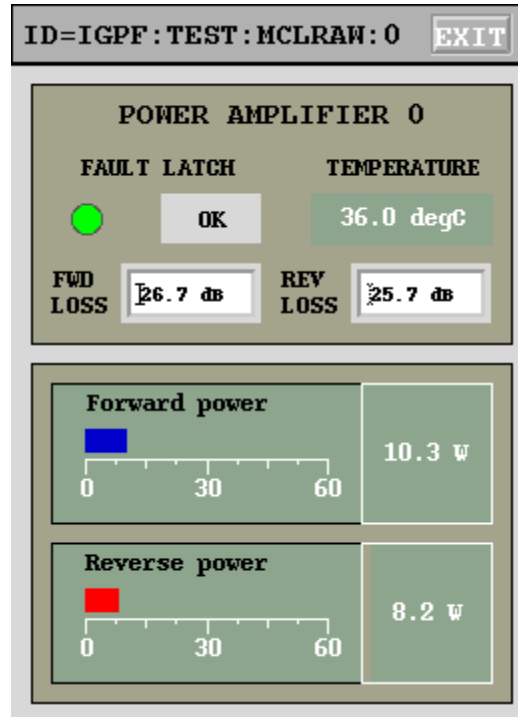


Figure 37: Mini-Circuits ZT-102 monitoring via DE-9 front panel connector

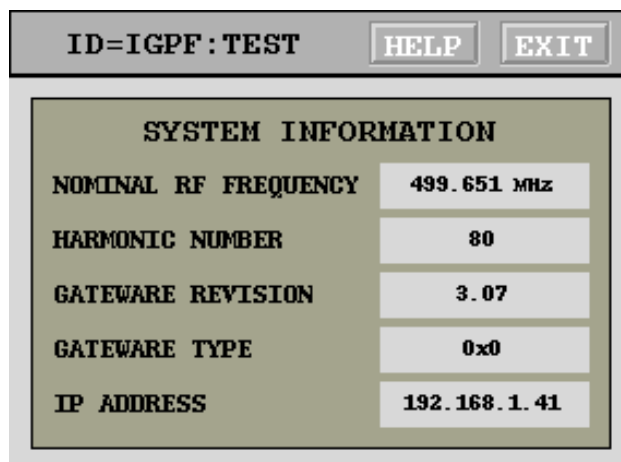


Figure 38: Information panel

**adctest**

This function extracts the iGp12-372F data and fits a sinewave to it. It accepts the **IOC** device name and the number of times to repeat the acquisition/fitting cycle.

## 7 Specifications

**Table 2: General specifications**

Parameter	Definition
Operating frequency	476 MHz
<b>RF</b> input level	−9 to 9 dBm, -3 dBm nominal
Number of <b>FIR</b> taps	32
Harmonic number	372
Fiducial signal	Falling edge trigger, selectable threshold
Minimum fiducial pulse width	2.1 ns
External trigger inputs	2 inputs, rising/falling edge, selectable threshold
Minimum trigger pulse width	2.1 ns
Data acquisition memory ( <b>SRAM</b> )	12 Msamples
<b>FPGA</b> dual-port memory ( <b>blockRAM</b> )	276 ksamples
Slow analog inputs	8 channels @12 bits, -2.048 to 2.048 V
Slow analog outputs	8 channels @14 bits, −1.5 to 1.5 V swing into 50 $\Omega$
General purpose digital I/O	32 bits in/out, <b>LVTTL</b>
Chassis	2U 19" rackmount, 16" deep

**Table 3: High-speed ADC and DAC specifications**

Parameter	Definition
ADC inputs	2 complementary
ADC input impedance	50 $\Omega$
ADC input full scale sensitivity	780 mV peak-to-peak (+1.8 dBm)
ADC resolution	12 bits
ADC input bandwidth	1.3 GHz
DAC outputs	2 complementary
DAC output impedance	50 $\Omega$
DAC FS	800 mV peak-to-peak (+2 dBm)
DAC resolution	12 bits
DAC rise time (10%-90% FS)	350 ps
DAC fall time (90%-10% FS)	350 ps

**Table 4: Trigger and fiducial inputs**

Parameter	Definition
Minimum input level	-3.3 V
Maximum input level	3.3 V
Termination impedance	50 $\Omega$
Switching threshold range	$\pm 3$ V
Minimum high level	-1.3 V
Maximum low level	3.1 V
Minimum swing (input to threshold)	0.2 V
Maximum swing (input to threshold)	4.3 V

**Table 5: FIR filter control**

Parameter	Definition
Coefficients	16 bit wide in Q15 format
Coefficient sets	4
Coefficient set select, bit 0	Manual or transient control
Coefficient set select, bit 1	Bunch-by-bunch select mask
<b>FIR</b> channel enable control	On/Off
Shift gain	0 to 7
Downsampling	1–256

**Table 6: Control parameters**

Parameter	Definition
One-turn delay adjustment	$T_{\text{RF}}$ per step, up to one revolution
<b>DCM</b> reset	Control panel pushbutton
Clock and fiducial delays	4 channels
Clock and fiducial delay step	10 ps
Clock and fiducial delay range	0–10.23 ns
General-purpose analog outputs	8 channels
Fiducial and trigger thresholds	3 channels
High-speed <b>DAC</b> offset adjustment	1 channel
General-purpose digital outputs	32 inputs/outputs

**Table 7: Data acquisition controls**

Parameter	Definition
Recording memory selection	<b>FPGA</b> internal <b>blockRAM</b> or external <b>SRAM</b>
Measurement trigger	Internal or external
External trigger arming	Single or after every beam data read-out
Recorded growth length	Adjustable in units of 3 samples, up to full memory length
Hold-off before recording	In units of 3 samples, 0 to $2^{32} - 1$
Recording downsampling	1 to 32

**Table 8: Monitoring and diagnostics**

Parameter	Definition
Clock status	<b>RF</b> clock missing, <b>DCM</b> lock
Feedback channel status	<b>FIR</b> saturation
Acquisition state machine status	Trigger arming bit
Voltages	<b>FPGA</b> core supply, 3.3 V, 5 V, 12 V bulk
Temperatures	<b>FPGA</b> , ambient, two <b>ECL</b> devices
Analog inputs	8 slow <b>ADC</b> channels
Digital inputs	32 general-purpose inputs/outputs

**Table 9: Drive signal generators**

Parameter	Definition
Number of independent generators	3
Output waveform	Sine, square, or DC
Amplitude	0–1
Bunch selectability	Bunch-by-bunch drive enable mask. Allows any subset of bunches to be driven
Frequency range	0– $F_{\text{rf}}/2$

**Table 10: Input Power Requirements**

Parameter	Definition
Input voltage	90–264 VAC
Input current	Max 6 A at 115 VAC
Frequency	47–63 Hz
Voltage selection	Automatic, full range input

## 8 Warranty and Support

### 8.1 Warranty

Dimtel Inc. warrants this product for a period of one year from the date of shipment against defective workmanship or materials. This warranty excludes any defects, failures or damage caused by improper use or inadequate maintenance, installation or repair performed by Customer or a third party not authorized by Dimtel, Inc. Warrantied goods will be either repaired or replaced at the discretion of Dimtel, Inc. The above warranties are exclusive and no other warranty, whether written or oral, is expressed or implied.

### 8.2 Support

Dimtel Inc. will provide technical support for the product free of charge for a period of one year from the date of shipment. Such support is defined to include:

- FPGA gateware bug fixes and upgrades;
- IOC software bug fixes and upgrades;
- Client software (display panels, external interface) bug fixes and upgrades;
- Phone, e-mail, and remote access (when allowed by the Customer) support of software and hardware integration.

Free of charge technical support specifically excludes:

- Commissioning with beam;
- Feedback algorithm development and testing;
- Beam dynamics characterization;
- Operational support related to dynamic system operation.

## 9 Appendix A: Address Map

### 9.1 Registers

#### 9.1.1 Overall Layout

The general register layout for the iGp12-372F reserves space below 0x100 for **FIR** coefficients. This allows for a maximum of 128 coefficients in two sets. Control and status registers are placed starting at 0x100.

Table 11: **FPGA** registers: **FIR**

Address	Bits	Definition
0x000000	15:0	<b>FIR</b> coefficient 0, set 0
0x000001	15:0	<b>FIR</b> coefficient 0, set 1
0x000002	15:0	<b>FIR</b> coefficient 1, set 0
0x000003	15:0	<b>FIR</b> coefficient 1, set 1
0x000004	15:0	<b>FIR</b> coefficient 2, set 0
0x000005	15:0	<b>FIR</b> coefficient 2, set 1
0x000006	15:0	<b>FIR</b> coefficient 3, set 0
0x000007	15:0	<b>FIR</b> coefficient 3, set 1
0x000008	15:0	<b>FIR</b> coefficient 4, set 0
0x000009	15:0	<b>FIR</b> coefficient 4, set 1
0x00000a	15:0	<b>FIR</b> coefficient 5, set 0
0x00000b	15:0	<b>FIR</b> coefficient 5, set 1
0x00000c	15:0	<b>FIR</b> coefficient 6, set 0
0x00000d	15:0	<b>FIR</b> coefficient 6, set 1
0x00000e	15:0	<b>FIR</b> coefficient 7, set 0
0x00000f	15:0	<b>FIR</b> coefficient 7, set 1
0x000010	15:0	<b>FIR</b> coefficient 8, set 0
0x000011	15:0	<b>FIR</b> coefficient 8, set 1
0x000012	15:0	<b>FIR</b> coefficient 9, set 0
0x000013	15:0	<b>FIR</b> coefficient 9, set 1
0x000014	15:0	<b>FIR</b> coefficient 10, set 0
0x000015	15:0	<b>FIR</b> coefficient 10, set 1
0x000016	15:0	<b>FIR</b> coefficient 11, set 0
0x000017	15:0	<b>FIR</b> coefficient 11, set 1

Continued on next page



Table 11 – continued from previous page

Address	Bits	Definition
0x000018	15:0	<b>FIR</b> coefficient 12, set 0
0x000019	15:0	<b>FIR</b> coefficient 12, set 1
0x00001a	15:0	<b>FIR</b> coefficient 13, set 0
0x00001b	15:0	<b>FIR</b> coefficient 13, set 1
0x00001c	15:0	<b>FIR</b> coefficient 14, set 0
0x00001d	15:0	<b>FIR</b> coefficient 14, set 1
0x00001e	15:0	<b>FIR</b> coefficient 15, set 0
0x00001f	15:0	<b>FIR</b> coefficient 15, set 1
0x000020	15:0	<b>FIR</b> coefficient 16, set 0
0x000021	15:0	<b>FIR</b> coefficient 15, set 1
0x000022	15:0	<b>FIR</b> coefficient 17, set 0
0x000023	15:0	<b>FIR</b> coefficient 17, set 1
0x000024	15:0	<b>FIR</b> coefficient 18, set 0
0x000025	15:0	<b>FIR</b> coefficient 18, set 1
0x000026	15:0	<b>FIR</b> coefficient 19, set 0
0x000027	15:0	<b>FIR</b> coefficient 19, set 1
0x000028	15:0	<b>FIR</b> coefficient 20, set 0
0x000029	15:0	<b>FIR</b> coefficient 20, set 1
0x00002a	15:0	<b>FIR</b> coefficient 21, set 0
0x00002b	15:0	<b>FIR</b> coefficient 21, set 1
0x00002c	15:0	<b>FIR</b> coefficient 22, set 0
0x00002d	15:0	<b>FIR</b> coefficient 22, set 1
0x00002e	15:0	<b>FIR</b> coefficient 23, set 0
0x00002f	15:0	<b>FIR</b> coefficient 23, set 1
0x000030	15:0	<b>FIR</b> coefficient 24, set 0
0x000031	15:0	<b>FIR</b> coefficient 24, set 1
0x000032	15:0	<b>FIR</b> coefficient 25, set 0
0x000033	15:0	<b>FIR</b> coefficient 25, set 1
0x000034	15:0	<b>FIR</b> coefficient 26, set 0
0x000035	15:0	<b>FIR</b> coefficient 26, set 1
0x000036	15:0	<b>FIR</b> coefficient 27, set 0
0x000037	15:0	<b>FIR</b> coefficient 27, set 1
0x000038	15:0	<b>FIR</b> coefficient 28, set 0
0x000039	15:0	<b>FIR</b> coefficient 28, set 1
0x00003a	15:0	<b>FIR</b> coefficient 29, set 0
Continued on next page		

Table 11 – continued from previous page

Address	Bits	Definition
0x00003b	15:0	<b>FIR</b> coefficient 29, set 1
0x00003c	15:0	<b>FIR</b> coefficient 30, set 0
0x00003d	15:0	<b>FIR</b> coefficient 30, set 1
0x00003e	15:0	<b>FIR</b> coefficient 31, set 0
0x00003f	15:0	<b>FIR</b> coefficient 31, set 1

### 9.1.2 Gateware Config Register

Gateware configuration register (0x107) provides information about the unit's functionality, gateware revision, harmonic number, and processing demultiplexing.

Table 12: **FPGA** registers: control and status

Address	Bits	Definition
0x000100	Main control register	
	0	Data acquisition trigger
	1	External trigger input select, 1 - TRIG1, 0 - TRIG2
	2	Coefficient set select, 0 - set 0, 1 - set 1
	3	<b>FIR</b> channel disable, 1 - disabled
	6:4	Shift gain, 0 through 7
	7	<b>DCM</b> reset
	8	Grow/damp enable
	9	Trigger select, 1 - external
	10	External trigger arming, arms on rising edge
	11	<b>SRAM</b> interface select, 0 - local bus, 1 - <b>ADC</b>
	12	<b>ADC</b> test pattern generator enable
	13	<b>DAC</b> drive phase: 0 - 0 degrees, 1 - 180 degrees
	15:14	Reserved
	16	GPIO driver select, 0 - bit-by-bit, 1 - FBE
	31-17	Reserved
Continued on next page		

Table 12 – continued from previous page

Address	Bits	Definition
0x000101	Status register, reset on read	
	0	<b>RF</b> clock missing
	1	Saturation
	2	Processing <b>DCM</b> unlocked
	3	External trigger arming status
	4	Local bus clock <b>DCM</b> unlocked
	5	Fiducial error
	6	Acquisition <b>DCM</b> unlocked
	7	<b>ADC</b> over-range
	31:8	Reserved
0x000102	DCM phase shift register	
	8:0	Phase shift, signed 9-bit value from -256 ( $-2\pi$ ) to 255 ( $2\pi$ )
	31:9	Unused, read out as 0
0x000104	Output delay length	
	10:0	Delay length in units of 4 samples
	15:11	Recording downsampling, 0 - every turn, $N_{ds} = \text{regval} + 1$
	20:16	Processing downsampling
	27:24	Fine delay adjustment, one sample per step (larger values produce smaller delay)
	31:28	Reserved
0x000105	Grow/damp filter 2 length	
	21:0	Number of 3-sample groups to hold <i>setsel</i> inverted during data acquisition (growth length)
	31:22	Reserved
Continued on next page		

**Table 12 – continued from previous page**

Address	Bits	Definition
0x000106	Hold-off length	
	31:0	Number of 3-sample groups to hold <i>setsel</i> inverted before data acquisition
0x000107	Gateware config register (read-only)	
	12:0	Harmonic number
	14:13	Demux mode, 0 - by4, 1 - by6, 2 - by8, 3 - uneven stepping
	15	Reserved
	23:16	Gateware revision
	31:24	Gateware functionality, 0 - feedback
0x000108	Fiducial delay	
	11:0	Fiducial delay, two samples per step
	31:12	Reserved
0x000109	Acquisition length	
	21:0	Acquisition length in units of 3 samples
	31:22	Reserved
0x000200	Acquisition status (read-only)	
	0	Acquisition completed flag
	31:1	Reserved
0x000201	ADC test counter start <sup>3</sup>	
	31:0	Test pattern start value
0x000202	CIC mean output (read-only) <sup>4</sup>	
	31:0	Decimated input average, DC gain of $15.625 \times 10^6$

## 9.2 Environmental monitor

iGp12-372F uses two MAX1299 devices for monitoring five temperatures and three power supply voltages. The SPI interface module for the controller uses sixteen addresses, as described in table 13.

Let's consider the first device (addresses 0x110–0x117). Analog inputs 0 and 1 (AIN0, AIN1) are connected to the FPGA temperature diode. General

---

<sup>3</sup>Gateware revision 1.2 and higher

<sup>4</sup>Gateware revision 1.4 and higher

conversion function from the raw register value to temperature in degrees Celsius is  $x/32 - 273.15$ . Analog inputs 2 and 3 are used to measure analog 3.3 and 5 V supplies.

MAX1299 also measures the ambient chassis temperature via the internal diode.

Four supply voltages are measured: analog 5 V on AIN2, analog 3.3 V on AIN3, and FPGA core (1 V) is connected to AIN4. Digital 3.3 V supply internally measured by MAX1299. Raw register value can be converted to voltage by  $2.4 \times X / 16384$ . For the 3.3 V supply the value must be multiplied by 4, since MAX1299 monitors  $V_{dd}/4$ . Attenuation factor for the analog 3.3 V supply is  $2/3.3$  and for the analog 5 V supply it is  $2/5$ .

The second device is configured for external temperature sensors at AIN0–AIN1 and AIN2–AIN3. AIN4 is connected to a resistive divider monitoring bulk 12 V supply. Divider ratio is  $1/6$  for 2 V nominal **ADC** input.

Table 13: **FPGA** registers: MAX1299 monitors

Address	Bits	Definition
0x000110	15:0	Device 1, AIN2 (analog 5 V)
0x000111	15:0	Device 1, AIN3 (analog 3.3 V)
0x000112	15:0	Device 1, AIN4, FPGA core voltage $V_{int}$
0x000113	15:0	Device 1, Internal diode
0x000114	15:0	Device 1, $V_{dd}/4$ , 3.3 V supply monitor
0x000115	15:0	Device 1, External diode (AIN0/AIN1), FPGA die temperature
0x000116	15:0	Device 1, AIN2-AIN3 differential measurement
0x000117	15:0	Device 1, AIN5-AIN5 differential measurement
0x000118	15:0	Device 2, AIN2
0x000119	15:0	Device 2, AIN3
0x00011a	15:0	Device 2, AIN4, bulk supply monitor
0x00011b	15:0	Device 2, Internal diode
0x00011c	15:0	Device 2, $V_{dd}/4$ , 3.3 V supply monitor
0x00011d	15:0	Device 2, External diode (AIN0/AIN1)
0x00011e	15:0	Device 2, External diode (AIN2/AIN3)
0x00011f	15:0	Device 2, AIN5-AIN5 differential measurement

### 9.3 MAX1202 8-channel ADC

iGp12-372F includes an 8-channel 12-bit serial-interface **ADC**. The SPI controller for the **ADC** uses 8 consecutive addresses, as shown in Table 14. **ADC** is continuously polled by the controller. Reading one of the channel registers returns the result of the last conversion. **ADC** data is sign extended from 12 bits to 16. The valid data range is from 0xf800 to 0x7fff. **ADC** input range is from  $-2.048$  to  $2.047$  V, i.e. 1 mV per LSB.

Table 14: **FPGA** registers: MAX1202 **ADC**

Address	Bits	Definition
0x000120	11:0	<b>ADC</b> channel 0
0x000121	11:0	<b>ADC</b> channel 1
0x000122	11:0	<b>ADC</b> channel 2
0x000123	11:0	<b>ADC</b> channel 3
0x000124	11:0	<b>ADC</b> channel 4
0x000125	11:0	<b>ADC</b> channel 5
0x000126	11:0	<b>ADC</b> channel 6
0x000127	11:0	<b>ADC</b> channel 7

### 9.4 AD5644 DACs

iGp12-372F has 3 4-channel 14-bit serial-interface **DACs**. The SPI controller for the **DACs** uses 16 consecutive addresses, as shown in Table 15. Writing to one of the registers starts an SPI writing cycle which loads the new value into the **DAC**. Register reads are sign-extended to 32 bits. Eight outputs are brought out to the front panel, while the remaining four are used to set logic thresholds and trim high-speed **DAC**. **DAC** reference voltage is 3 V for  $-3$  to  $+3$  V output range. Output drivers generate full swing into high-impedance loads. For  $50\ \Omega$  loads the swing is reduced to 1.5 V.

Table 15: FPGA registers: AD5644 DAC s

Address	Bits	Definition
0x000150	13:0	DAC channel 0
0x000151	13:0	DAC channel 1
0x000152	13:0	DAC channel 2
0x000153	13:0	DAC channel 3
0x000154	13:0	DAC channel 4
0x000155	13:0	DAC channel 5
0x000156	13:0	DAC channel 6
0x000157	13:0	DAC channel 7
0x000158	13:0	DAC channel 8 (TRIG2 threshold)
0x000159	13:0	DAC channel 9 (FID threshold)
0x00015a	13:0	DAC channel 10 (TRIG1 threshold)
0x00015b	13:0	DAC channel 11 (DAC offset)
0x00015c	0	Internal/external reference select, channels 0–3
0x00015d	0	Internal/external reference select, channels 4–7
0x00015e	0	Internal/external reference select, channels 8–11
0x00015f	0	Test mode (sawtooth)

## 9.5 ECL delay lines

Several MC100EP195 ECL delay lines are used on the iGp12-372F to line up the received RF clock and the fiducial signal. These lines are controlled by registers described in Table 16.

Delay line 0 controls the delay of the ADC clock. Relative delay between lines 1 and 2 is used to achieve reliable detection of the fiducial falling edge in the front-end. Once that relative delay is determined, both 1 and 2 must be adjusted together to achieve proper timing between the fiducial (reset) pulse to the ADC and the ADC clock. This second stage fixes relative delays between 0, 1, and 2. Finally, delay line 3 must be adjusted to achieve optimal placement of the DAC clock relative to the FPGA data.

## 9.6 General-purpose digital I/O

---

Table 16: **FPGA** registers: **ECL** delay lines

Address	Bits	Definition
0x000130	9:0	Delay line 0 ( <b>ADC</b> clock)
0x000131	9:0	Delay line 1 (Fiducial clock)
0x000132	9:0	Delay line 2 (Fiducial)
0x000133	9:0	Delay line 3 ( <b>DAC</b> clock)

## 9.6 General-purpose digital I/O

There are two distinctly different drivers implemented in the gateway for the control of the general-purpose digital **I/O** port of the iGp12-372F. A generic bit-by-bit driver is accessed when bit 16 of the main control register (0x100) is set to 0. The port is accessed via three registers listed in Table 17.

Table 17: **FPGA** registers: bit-by-bit GPIO

Address	Bits	Definition
0x000138	31:0	Output data
0x000139	31:0	Direction (1 - out, 0 - in)
0x00013a	31:0	Pin value readback

A custom driver designed for interfacing to Dimtel, Inc. longitudinal front/back-end units (FBE) is selected when bit 16 of the main control register is set to 1. The custom driver is included in the gateway starting from version 1.4. Front and back-end phase settings control carrier phases in the front and the back-end respectively. Offset-binary DAC setting in each case provides adjustment range of  $\approx 400$  degrees at the carrier frequency. Front and back-end attenuation settings are in 0.5 dB steps for a total range of 31.5 dB.



Table 18: **FPGA** registers: Front/back-end GPIO

Address	Bits	Definition
0x00013c	11:0	Front-end phase
0x00013d	11:0	Back-end phase
0x00013e	5:0	Front-end attenuation
0x00013f	5:0	Back-end attenuation

## 9.7 Memory

iGp12-372F is configured with two data acquisition memory spaces: **block-RAM** internal to the **FPGA** and external **SRAM**. Memory address mapping is provided in Table 19.

Table 19: Data acquisition memory

Address range	Definition
0x010000-0x01ffff	64k×36 <b>blockRAM</b> (192 ksamples)
0x800000-0xafffff	4M×36 <b>SRAM</b> (12 Msamples)

10 Appendix B: Connector Pinouts

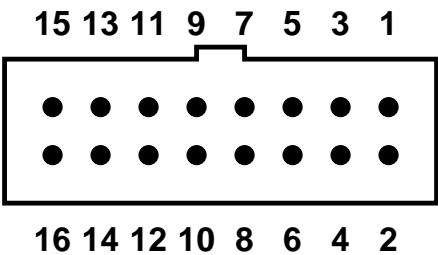


Figure 39: Pin numbering for 16-pin header-type front-panel connectors

Pin numbering scheme for the 16-pin front-panel connectors is shown in Figure 39. Pin definitions for the 8-channel ADC and DAC are provided in Table 20.

Table 20: 8-channel ADC/DAC pinout

Pin number	Definition
1	Channel 7
2	GND
3	Channel 6
4	GND
5	Channel 5
6	GND
7	Channel 4
8	GND
9	Channel 3
10	GND
11	Channel 2
12	GND
13	Channel 1
14	GND
15	Channel 0
16	GND

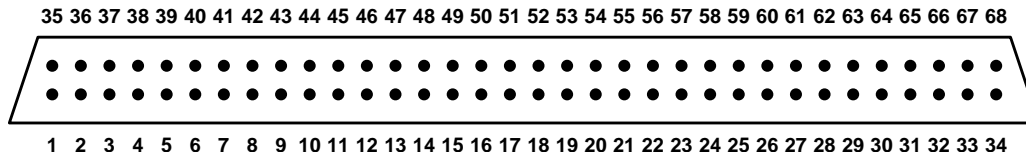


Figure 40: Pin numbering for general-purpose digital I/O connector

Figure 40 shows the pin numbering for the general-purpose digital I/O connector. Pin definitions are listed in Table 21.

Table 21: General-purpose digital I/O pinout

Pin number	Definition
1	Bit 31
2	Bit 30
3	Bit 29
4	Bit 28
5	Bit 27
6	Bit 26
7	Bit 25
8	Bit 24
9	Bit 23
10	Bit 22
11	Bit 21
12	Bit 20
13	Bit 19
14	Bit 18
15	Bit 17
16	Bit 16
17	GND
18	Bit 15
19	Bit 14
20	Bit 13
21	Bit 12
22	Bit 11
23	Bit 10
24	Bit 9
25	Bit 8
26	Bit 7
27	Bit 6
28	Bit 5
29	Bit 4
30	Bit 3
31	Bit 2
32	Bit 1
33	Bit 0
Continued on next page	

Table 21 – continued from previous page

Pin number	Definition
34	Bit N/C
35	GND
36	GND
37	GND
38	GND
39	GND
40	GND
41	GND
42	GND
43	GND
44	GND
45	GND
46	GND
47	GND
48	GND
49	GND
50	GND
51	GND
52	GND
53	GND
54	GND
55	GND
56	GND
57	GND
58	GND
59	GND
60	GND
61	GND
62	GND
63	GND
64	GND
65	GND
66	GND
67	GND
68	N/C



## 11 Glossary

### Glossary

#### ADC

An electronic circuit that converts continuous analog signals to discrete digital numbers. 6, 7, 12, 16, 18, 19, 28, 42, 53, 59, 61, 63–65, 74, 76, 80–86, 88

#### blockRAM

Random access memory integrated in Xilinx<sup>®</sup> FPGA in a form of 36 kbit blocks. 18, 21, 73, 75, 87

#### CIC

A discrete-time filter, which efficiently averages a large number of input samples. Such filters are typically used for sampling rate changes (decimation and interpolation). 54, 56, 57, 64, 82

#### CORDIC

A simple and efficient algorithm to calculate trigonometric functions without multiplications. 37, 54, 57

#### DAC

A hardware device to convert a sequence of digital codes to corresponding analog voltages or currents. 6–8, 12, 16, 18, 19, 24, 30, 31, 42, 44, 53, 59–61, 63, 74, 75, 80, 84–86, 88, 95

#### DC

In electrical engineering context — a constant signal, either voltage or current. 36, 82

#### DCM

A delay-locked loop (DLL) based clock management circuit integrated in the Xilinx<sup>®</sup> FPGA. The circuit allows fine phase adjustment of the output clock relative to the input. 8, 18, 28, 75, 76, 80, 81

## DDC

A digital signal processing element that converts a band limited signal to a lower frequency (typically baseband) and a lower sampling rate. [54](#)

## DLL

A device for managing clock skew in digital circuits. [93](#)

## ECL

A logic device family in which current is steered through bipolar transistors to compute logical functions. The chief characteristic of ECL is that the transistors are always in the active region and can thus change state very rapidly, allowing ECL circuits to operate at very high speed. [59](#), [76](#), [85](#), [86](#)

## EDM

A tool that manages a collection of active displays with the ability to create and edit display content as well as the ability to execute the same content resulting in the dynamic presentation of live data. [19](#), [20](#), [24](#)

## EPICS

A set of software tools and applications used to develop distributed soft real-time control systems. [7](#), [8](#), [13](#), [15](#), [18](#), [20](#), [30](#), [68](#), [70](#), [96](#)

## Ethernet

A family of frame-based computer networking technologies for local area networks. [6](#), [12](#)

## FFT

An efficient algorithm to compute the discrete Fourier transform. [48](#)

## FIR

A discrete-time filter, output of which only depends on a finite number of previous input samples. [6](#), [8](#), [24](#), [26–28](#), [60](#), [73](#), [75](#), [76](#), [78–80](#)



**FM**

Modulation method in which the carrier frequency is shifted according to the baseband modulation signal. [36](#)

**FPGA**

A semiconductor device containing programmable logic components and programmable interconnects. [6](#), [8](#), [15](#), [16](#), [18](#), [20](#), [36–38](#), [60](#), [73](#), [75](#), [76](#), [78](#), [80](#), [83–87](#), [93](#)

**FS**

Difference between maximum and minimum limits of the signal. For example, [DAC](#) full-scale is the difference of the outputs for maximum and minimum codes. [7](#), [12](#), [74](#)

**I/O**

An interface for transferring analog or digital signals to or from the device. [6](#), [16](#), [18](#), [62](#), [64–66](#), [86](#), [89](#)

**IOC**

An embedded computer used to interface the hardware to the control system. [6](#), [12–16](#), [18–20](#), [24](#), [48](#), [52](#), [58](#), [67](#), [69](#), [70](#), [72](#)

**Linux**

A Unix-like open-source operating system. [6](#)

**LVTTL**

Transistor-transistor logic with the same logic thresholds as [transistor-transistor logic \(TTL\)](#). LVTTL outputs can be connected directly to [TTL](#) inputs. [TTL](#) outputs can drive LVTTL inputs only if the latter are 5 V tolerant. [9](#), [62](#), [73](#)

**NCO**

A digital waveform synthesizer. [36](#), [54](#)

**NIM**

NIM (originally an acronym for Nuclear Instrumentation Methods) logic defines signal levels (with 50  $\Omega$  termination) of 0 V and  $-0.8$  V for logic 0 and 1 respectively. [59](#)

## PI

A feedback controller that uses a linear combination of terms proportional to the loop error (difference between the measurement and the setpoint) and to the integral of the loop error. [67](#)

## PLL

An oscillator, phase locked to the reference clock. Used to synthesize derived frequencies, manage phase shifts and jitter. [28](#), [42–44](#)

## PV

An individual control or readout signal in [EPICS](#). [15](#), [70](#)

## RF

In the accelerator context, a constant frequency constant amplitude signal derived from or phase locked to the storage ring master oscillator. [6–8](#), [12](#), [16](#), [28](#), [42–44](#), [46](#), [68](#), [69](#), [73](#), [76](#), [81](#)

## RMS

A statistical measure of the magnitude of a varying quantity. [48](#), [49](#), [54](#)

## SRAM

A type of semiconductor memory that retains its contents as long as the power is applied. [6](#), [18](#), [21](#), [22](#), [24](#), [29](#), [45](#), [46](#), [60](#), [73](#), [75](#), [80](#), [87](#)

## TTL

A class of digital circuits built from bipolar junction transistors and resistors. TTL defining signal levels:  $V_{OH} = 2.4\text{ V}$ ,  $V_{OL} = 0.4\text{ V}$ ,  $V_{IH} = 2\text{ V}$ , and  $V_{IL} = 0.8\text{ V}$ . [95](#)

## USB

A serial bus standard to interface a wide variety of devices. [6](#), [68](#)